

Building the GM5x5x5

Introduction

The GM5x5x5 is a midi interface for your computer. bla bla bla

Building Level

Noob guides have an difficulty indication from 1 to 5 where 1 is easy and 5 is hard to build. If you have never started a project before we urge you to start with a level 1 project first.

We indicate this project as Building level 3

Tools Needed

To start building your GM 5x5x5 board you will need some tools. Offcourse you could be creative and use whatever you like but this document is trying to be failsafe.

- Soldering Iron
- Soldering Flux
- Wire Cutter
- Beer
- etc put in pictures and so

Component List

The list is build up from components that should be solderd on the board in this order. However exeptions can be made. See building chapter for changes.

Diodes

Resistors

Sockets

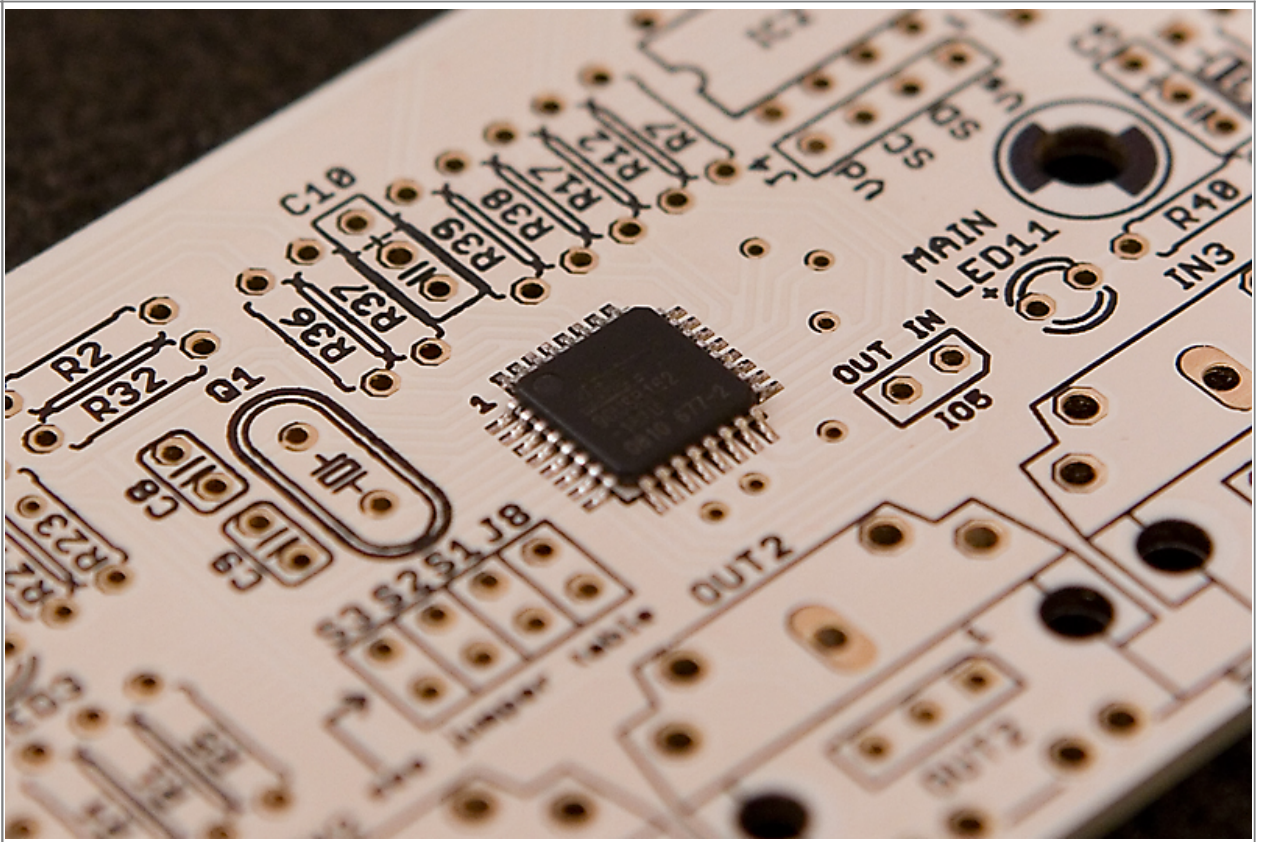
Capacitors

Other

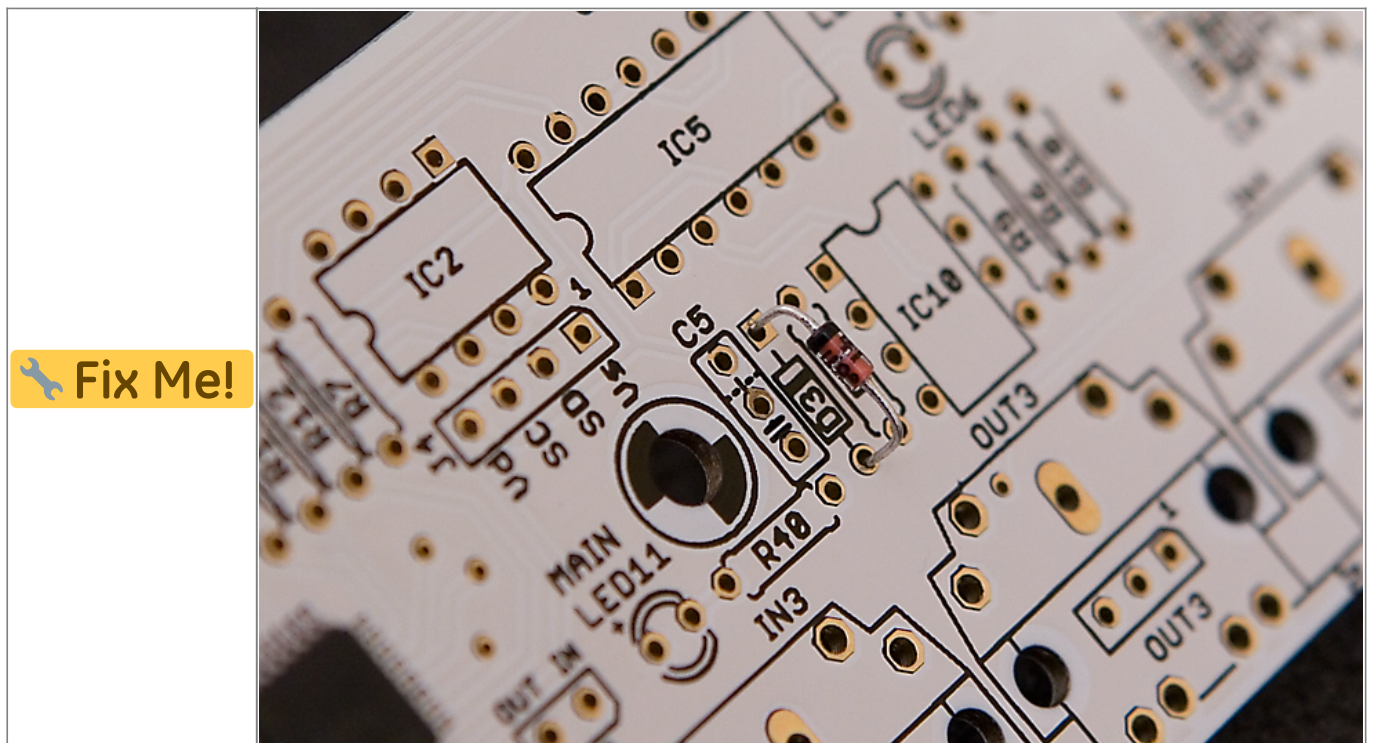
Building

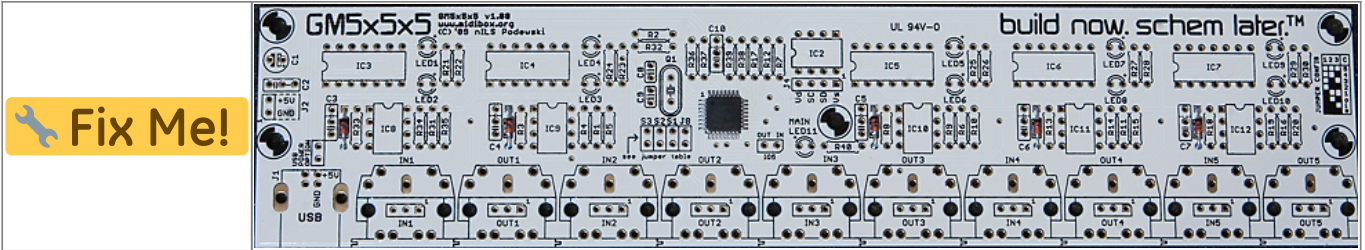
The Chip

This is the most difficult part of the whole project. If you manage to pull it off the rest of the project will be a breeze. Go to [Link](#) for a vid tutorial on how to solder this....

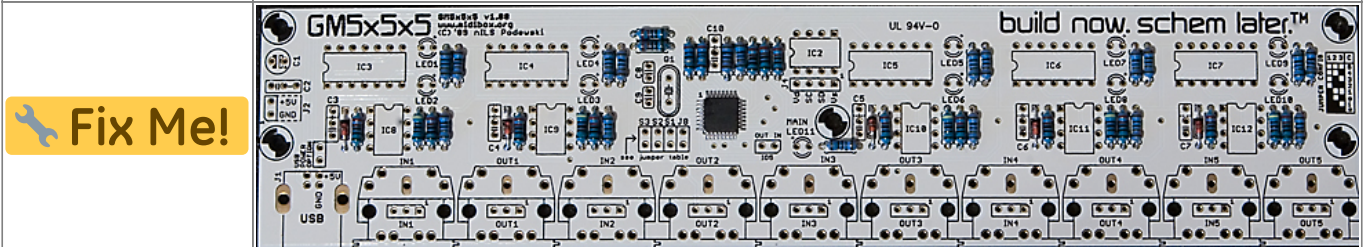
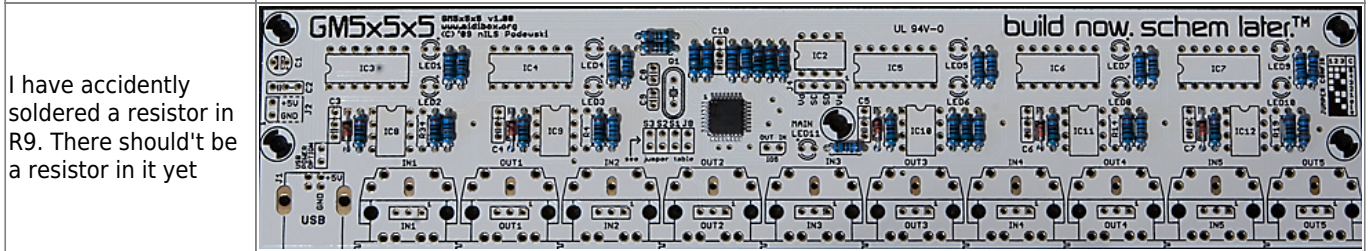
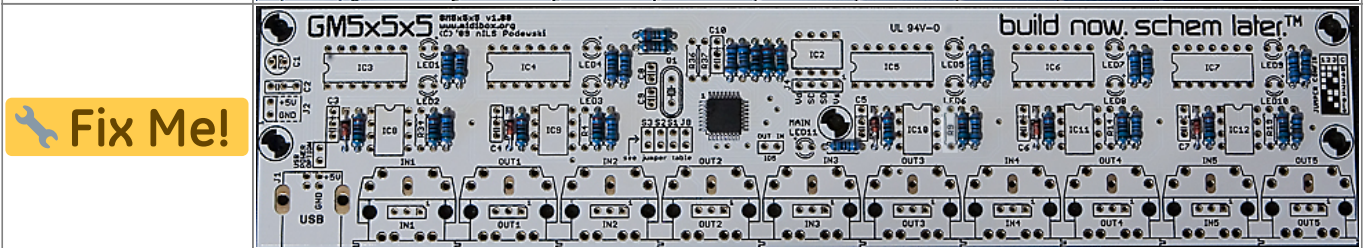
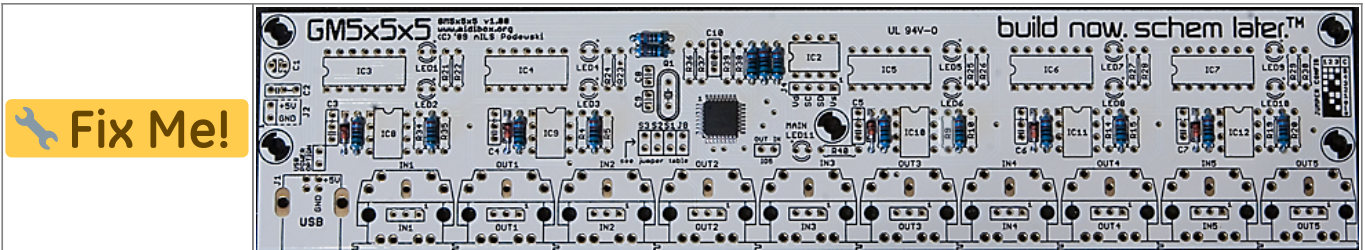


Diodes

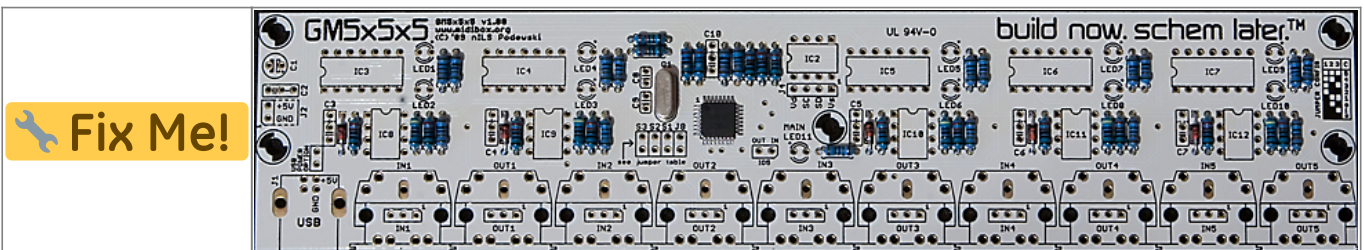




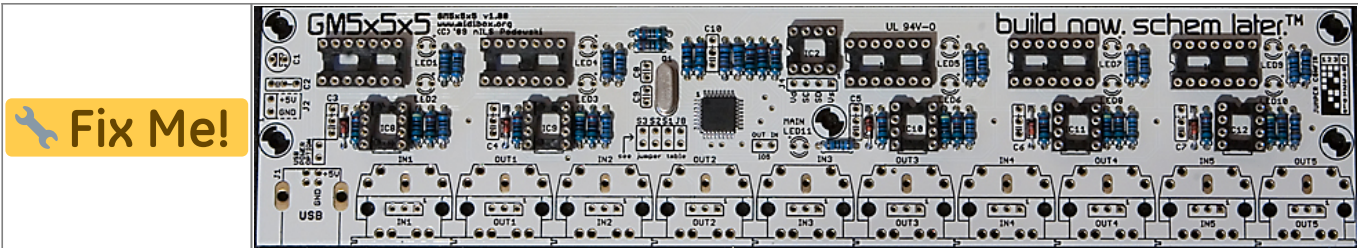
Resistors



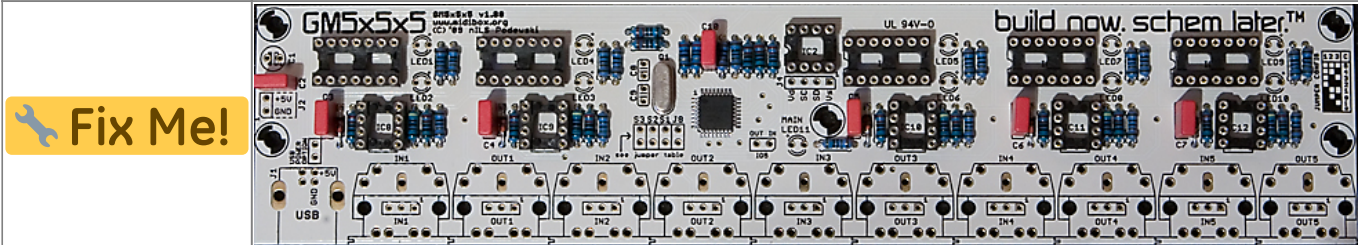
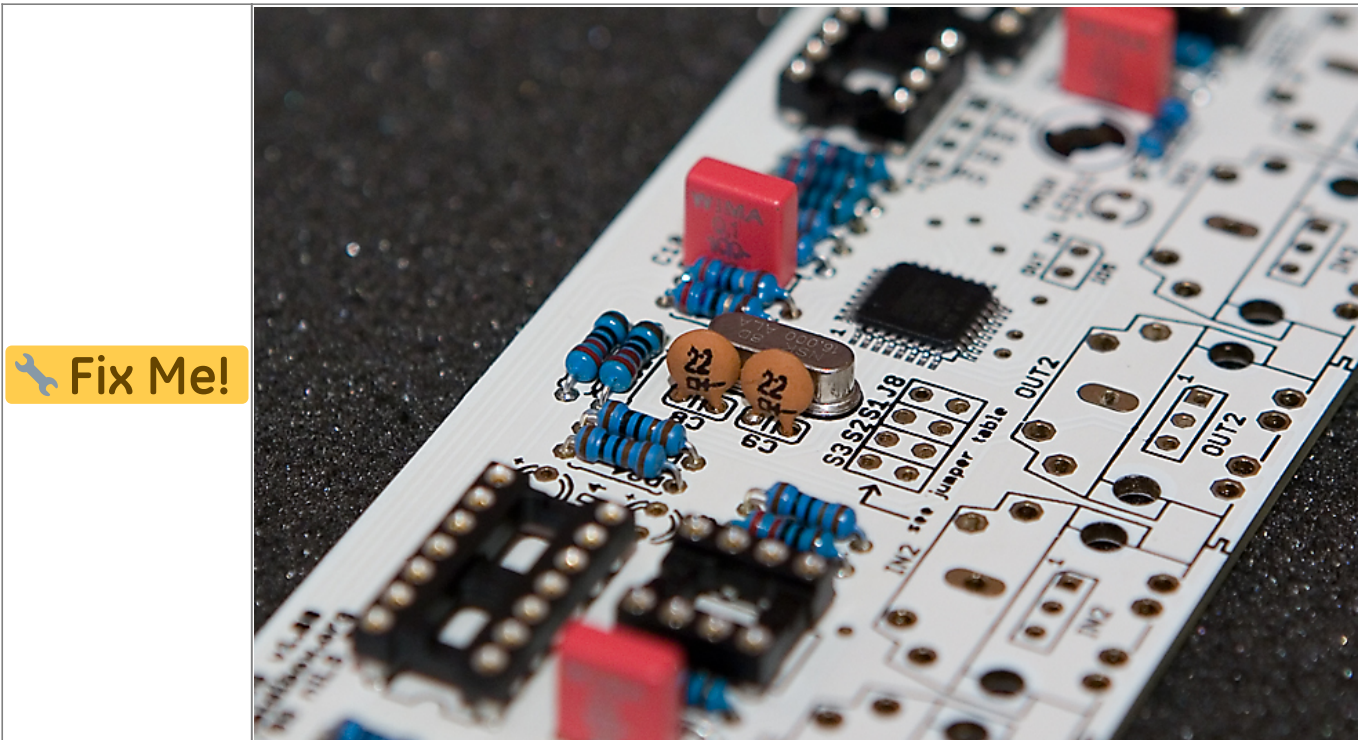
Crystal



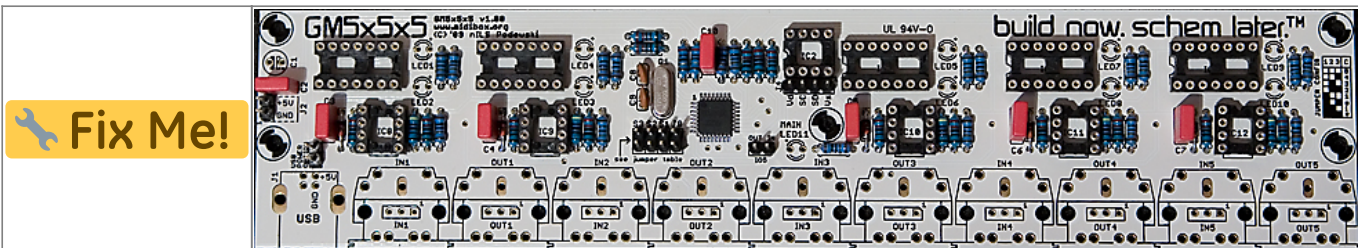
IC Sockets



Capacitors

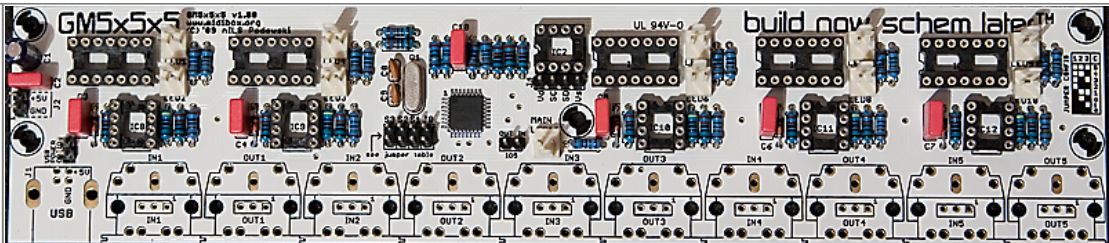


Pin Headers

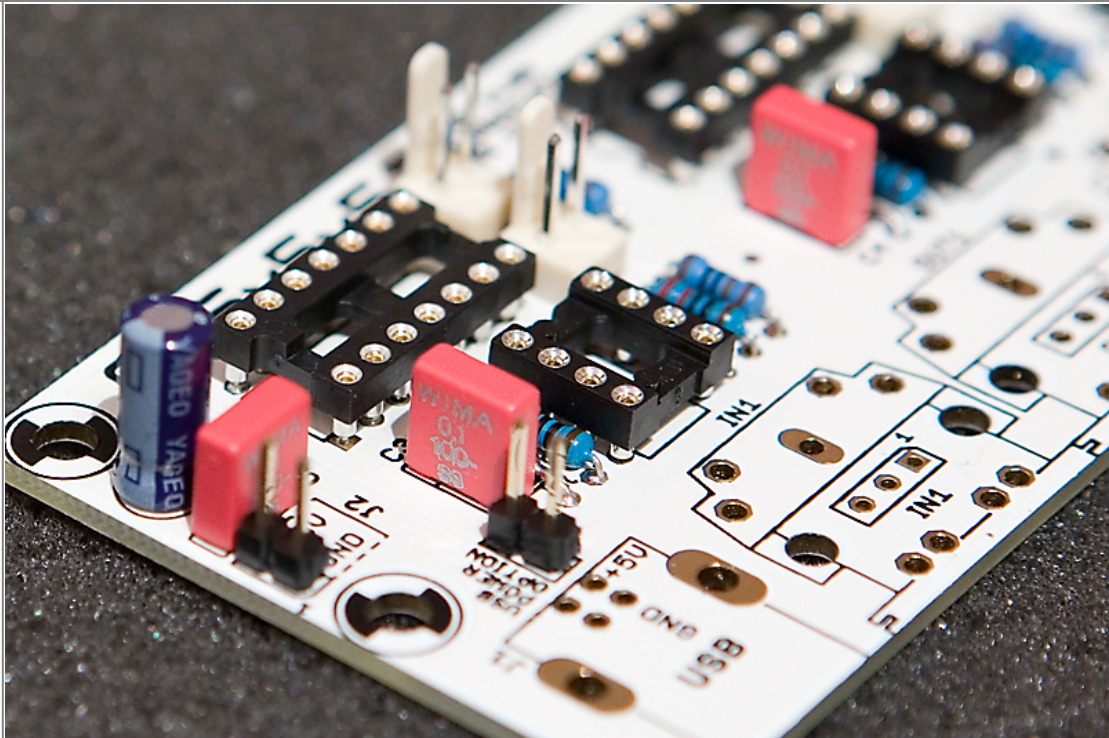


Electrolytic Capacitor

 **Fix Me!**

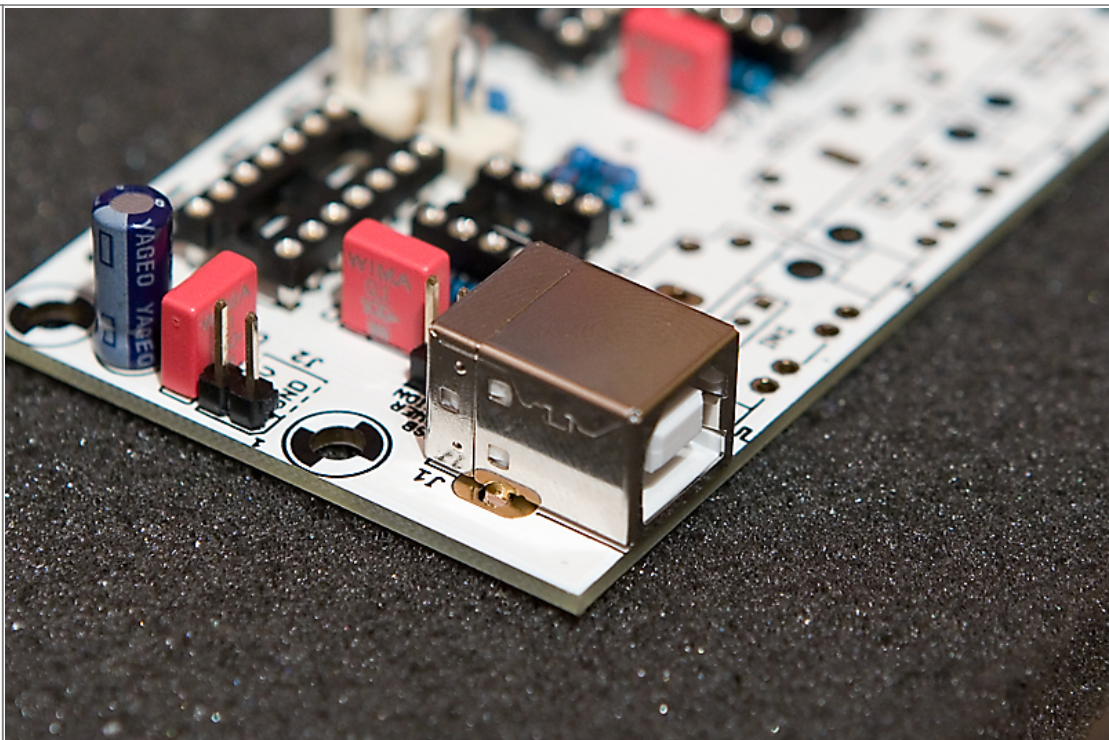


 **Fix Me!**

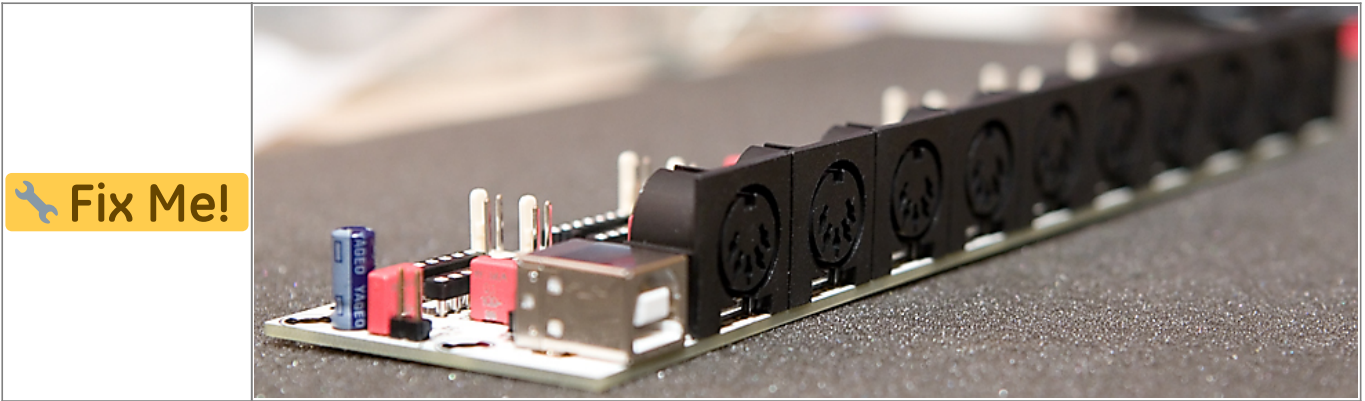


USB Socket

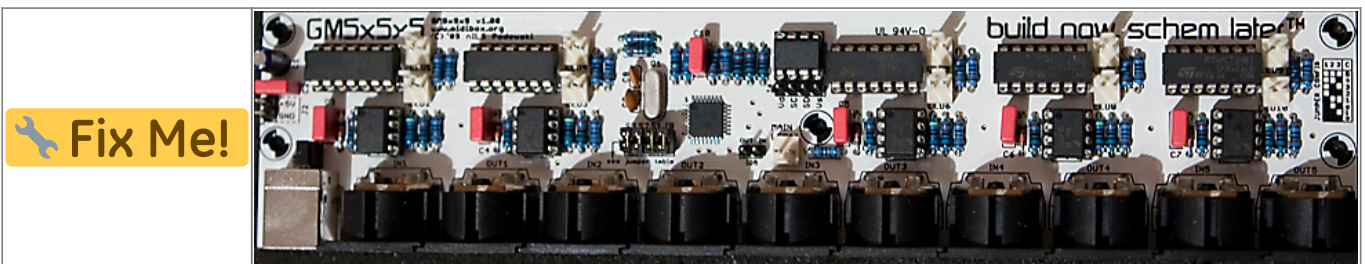
 **Fix Me!**



DIN Sockets



Placing IC's



From:
<http://wiki.midibox.org/> - **MIDIbox**

Permanent link:
http://wiki.midibox.org/doku.php?id=gm5x5x5_noob_guide

Last update: **2009/02/24 12:52**

