

Download PBPCE from [HERE](#)

Errata

OK, for a start, i'm not a real programmer, I've never worked in an object oriented environment before.

This project has served my personal want to learn more about programming.

So this is my first ever java application, without any formal training on the subject. It's buggy, cumbersome and lacks the finesse of experienced programmers. But it makes working with PB a much more enjoyable experience.

In the not too distant future I plan to completely re-write it from the ground up - implementing some of the things I have learned along the way right from the start, rather than hacking them in place. But that's a long way off yet!

PB PC Editor Manual

Overview

PBPCE provides a simple way to get information about your midi setup and setting into PB.

It works with 3 file types - .syx .rbs .pbx

.syx you should be familiar with. A standard sysex file, it's the same as that created by the hextosyx.pl script from TK.

.rbs (raw bank stick) is a replica of the data stored on a MBHP bankstick.

.pbx is used by PBPCE to store your entire rigs information, Basically a collection of .rbs files in one big file.

You need to have understanding of how PB works to use this. See the PB [manual](#) for more information

Getting Started



New - Opens a new Master Bankstick Window with default data loaded. This can be modified to suit your rig.

Load PBX file - Opens up a saved .pbx file

Import Master File - Opens a new Master Bankstick Window with data from a .rbs or .syx file.

MIDI IO Settings - Tell PBPCE what midi input and output is connected to your PB Hardware.

Master Bankstick Window

Overview

This window features the bulk of the application.

The Tree on the left displays all the information and settings for your PB hardware.

The Selection editor is where you change the settings for the selected item in the tree.

It also has facilities to save, export and upload data to the master bankstick.



Device name - Name of your Midibox PB hardware

Channel - Channel which you Midibox PB hardware will respond to (important for Pedal Box users).

Selection Editor

The Selection Editor allows you to edit the selected information from any bankstick window. The last selected tree item will be displayed in the Selection Editor and allow you to edit settings. Settings are updated automatically.

Information that is modifiable and the definition of each is dependant on what has been selected.

Name - Used for Rig Control Patch names, Gig Control List names and Device value maps

Parameter - Used by Device value maps to define mid parameter 2.

Status - NO LONGER USED

Handler - Used by Device Event information to define which handler PB should use when dealing with this midi event.

Bankstick - Used by Rig Control, AIN and DIN maps to define which of your midi devices the midi command should be sent to.

Event Type - Used by Rig Control, AIN and DIN maps to define the type of midi event.

Event - Used by Rig Control, AIN and DIN maps to define what event should be triggered.

Low Value - AIN and DIN maps to define the lowest value to be sent.

High Value - Used by Rig Control, AIN and DIN maps to define the Highest (or only) value to be sent.

Option -

Rig Control: Whether the event will be transmitted

AIN map: To configure whether or not the selected pedal will change settings dependant on the current Rog Control patch

DIN map: Toggle or Momentary action.

Opening Device Bankstick Windows

New - Opens a new Device bankstick Window with default data for you modify.

Import - opens a new Device bankstick Window with data from a saved .rbs or .syx file.

Saving Files

Export - Save data from the bankstick window to a .rbs or .syx file.

Save - Saves all open bankstick windows to a .pbx file.

Uploading information to your PB hardware

PIC ID - Set the PIC ID of your PB hardware here.

use feedback from core - uncheck if you don't wish to use feedback from the core during upload.

Send - will open an upload window and immediatly begin trasmitting data to the relevant bankstick.

Modifying Pedals / Analog Inputs

- In the Tree open the AIN folder.

A list of 8 inputs will appear.

- Open the desired input. This time a list of settings is shown.

Firstly Static? - This allows to edit whether or not this input will have different settings for each Rig Control Patch change. It is done with **Option** in the Selection editor.

Next are Setting 0, Setting 1, Setting 2... etc.

The number corresponds the program change number of the Rig Control Patches.

if Static? is set to 'Static' then only Setting 0 is used. If set to change w/pc the setting of the current program change number will be used.

- Select the desired Setting
 1. set the device you want to control with the **Bankstick** setting
 2. set the midi event type with **Event Type**
 3. set the midi event you want with **Event**. If you have device banksticks loaded into PBPBE they will be listed by name if you the event type is set control change.
 4. set the minimum and maximum values with **Low Value** and **High Value**

Modifying Buttons

- In the Tree open the DIN folder.

A list of 144 settings will appear.

These are 'Static Button' 1-16 (You may not be using all of these) and 'Banked Button' 1-128.

- Select the desired Setting
 1. set the device you want to control with the **Bankstick** setting
 2. set the midi event type with **Event Type**
 3. set the midi event you want with **Event**. If you have device banksticks loaded into PBPBE they will be listed by name if you the event type is set to control change or program change.
 4. set the low and high values with **Low Value** and **High Value**
 5. set whether it will be toggle or momentary action with **Option**

Toggle will switch between the low and high value. Momentary will be high when pressed and low when un-pressed.

Set to a Rig Control Patch

1. set the **Bankstick** to 0
2. set the **Event Type** to 'Program Change'
3. set the Patch with **Event**

Low / High / Option settings have no effect on functionality

Set to Prev/Next Cue

1. set the **Bankstick** to 0
2. set the **Event Type** to 'Special'
3. Use **Event** to select prev or next cue

Low / High / Option settings have no effect on functionality

Set to a Relay

1. set the **Bankstick** to 0
2. set the **Event Type** to 'Special'
3. Use **Event** to select the desired relay, they are listed after prev/next cue
4. set whether it will be toggle or momentary action with **Option**

Toggle will switch between off and on. Momentary will be on when pressed and off when un-pressed.

Low / High settings have no effect on functionality

Modifying Rig Control

* In the Tree open the Rig Control folder. A list of 128 patches will appear.

- Open the desired patch. This time a list of 32 events and 8 relay settings (you may not be using any of these) is shown.
 - Select the desired Event or Relay
1. set the device you want to control with the **Bankstick** setting
 2. set the midi event type with **Event Type**.
 3. set the midi event you want with **Event**. If you have device banksticks loaded into PBPBE they will be listed by name when event type is Control Change or Program Change
 4. set the values with **High Value**
 5. make sure you enable the Event with **Option**
 6. you can also set the name of the patch from any event with **Name**

Only events with enabled set in the option box will be triggered.

- For Relays
1. using **Option** you can set the relay on, off or no change.

Modifying Gig Control

* In the Tree open the Gig Control folder. A list of 128 cue lists will appear.

- Open the desired list. This time a list of 128 cues are shown.
- Select the desired Cue

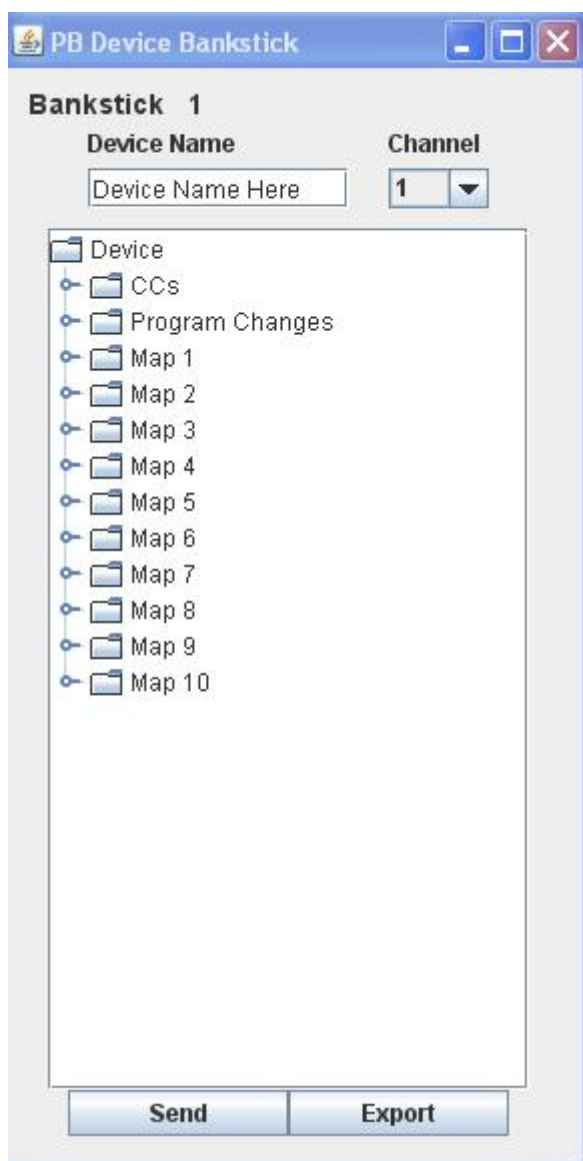
1. set the Patch you want with **Event**.
2. you can also set the name of the cue list from any cue with **Name**

Device Bankstick Window

Device Files are the link between your PB Hardware and Midi Devices that it is controlling. PB can not function correctly without them.

This window is opened from the Master Bankstick Window.

Overview



Same as the Master Bankstick, all the information is displayed in a Tree.

Creating Device Files

Device Name - the name of the Midi Device that this file is for.

Channel - The Midi channel that your device is set to receive data.

Modify information about events your device responds too

CC's and Program changes can be named. The maps are shown in order, with their control number listed first.

Let's use CC's as an example:

1. open the CC's folder

a list of 128 is shown, something like this '0 | Reverb level'
the format - '<control number> | <name of control>'

1. select the desired control to name
2. set the name of the control with **Name**
3. set the way PB will handle this event with **Handler** (see [Event Handlers](#)).

This is the same for the Program Change List.

Modify the value maps

Value maps can be selected as a handler for events in the Device Event List.

- Open the desired Map folder.

The first in the list is 'Entries: ##' - This number tells PB how many entries you are using in the list. This is followed by a list of 128 entries in the format of '<entry number> | <value or midi parameter 2>'

Not all need to be used, but they must be in order from lowest value to highest value, with no blank gaps.

Example:

on 0, 32, and 64. You want text to show, 'off', 'Quarter', and 'half'. You need to use the first 3 entries.

- Entries: 3
- 1 | 0: Off
- 2 | 32: Quarter
- 3 | 64: Half
- 4 | 0:
- 5 | 0:
- 6 | 0:
- etc

PB will use the name from the nearest lesser value. So at 40, the text would be 'Quarter'.

1. Select the desired entry.
2. Set the value with **Parameter**
3. Set the text associated with this value with **Name**
4. Repeat until done.
5. Select the Entries node at the top of the list and use **Parameter** to tell PB how many entries you have used

Save Device Files

Export - Files can be saved as a .rbs file for sharing with others. Or can be saved as a .syx file

Upload Device Files

Make sure your PIC ID has been set on the Master Bankstick Window and whether or not you want to use feedback from the core.

Send - Will open the upload window and immediatly begin transmitting.

Event Handlers

The display and MIDI handling is dependant on the event definition. This is set in the Device Event List with **Handler**

There are 9 types:

Handler	Button MIDI	Pedal MIDI	LED	LCD 2nd line
PROGRAM_CHANGE	Guess...	N/A	Marks Current	Device Name
ON_OFF_ONLY	Toggle 0/127	N/A	0 = off 127 = on	On or Off
TAP_TEMPO	127	N/A	On when pressed	Tempo in BPM
VALUE	Toggle Low/High	Scale Low - High	High = on, Other = off	value (decimal)
METER_ONLY	Toggle Low/High	Scale Low - High	High = on, Other = off	approx. position meter
METER_OFF	Toggle Low/High	Scale Low - High	High = on, Other = off	approx. position meter w/"off" when at 0
METER_ON_OFF	Toggle Low/High	Scale Low - High	High = on, Other = off	approx. position meter w/"off" when at 0 and "On" when at 127
METER_PAN	Toggle Low/High	Scale Low - High	High = on, Other = off	approx. pan style meter
USE_MAP_#	Toggle Low/High	Scale Low - High	High = on, Other = off	value map (10 available)

The event handler for each midi event is pre defined in the Device Event List.

Pedals can not be mapped to event types of the first three.

LCD first line is always the event name listed in the event map.

Application Notes

Known Bugs/Issues

- Tree in the Master Bankstick window can sometimes adopt text from the Device Bankstick window when editing settings in the Device bankstick

Please report bugs in the [Pedal Box forum thread](#)

History

- 0.6 - Updated to work with PB 2.5, + bug fixes
- 0.5 - (2nd Beta) Improved MIDI In when using feedback, added magic number support, updated to new bankstick data format.
- 0.4 - Fixed some bugs
- 0.3 - (First Beta) added Upload via MIDI features
- 0.2 - Improved GUI, added special file type for pb.
- 0.1 - First incarnation, no midi support. Can translate to and from syx files.

To Do

- Re-make gui into a desktop window
- Drag and Drop (one day, maybe)
- Lot's of pretty-ing
- Better code managment to improve performance

From:

<http://www.midibox.org/dokuwiki/> - **MIDIbox**

Permanent link:

http://www.midibox.org/dokuwiki/doku.php?id=pedal_box:pc_editor_manual&rev=1240725532

Last update: **2009/04/26 05:58**

