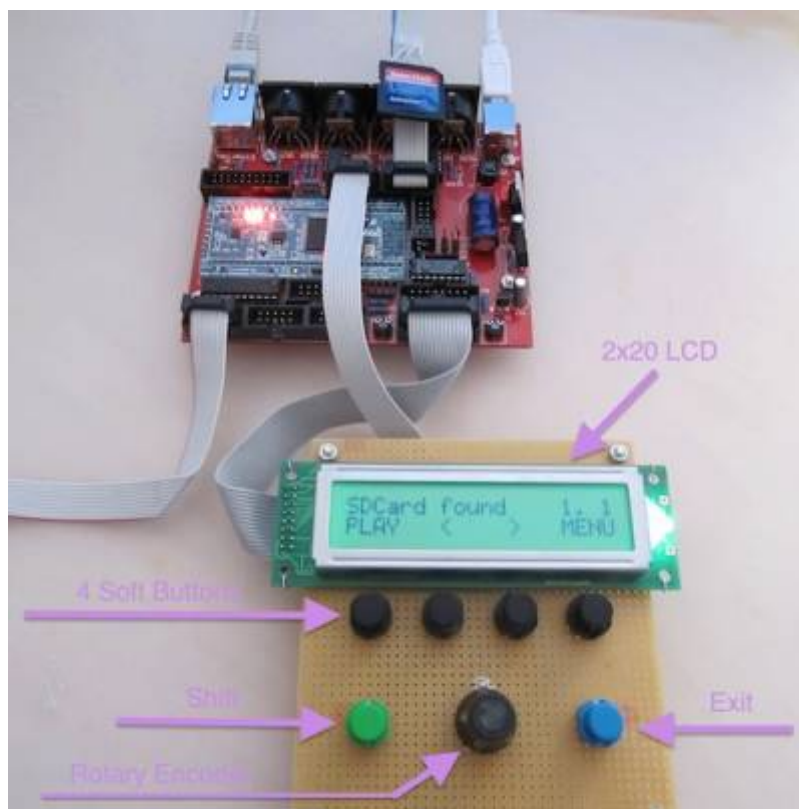


Standard Control Surface (SCS)



Introduction

The Standard Control Surface (SCS) allows to edit some (but not all) configuration values without the need of a computer.

Description

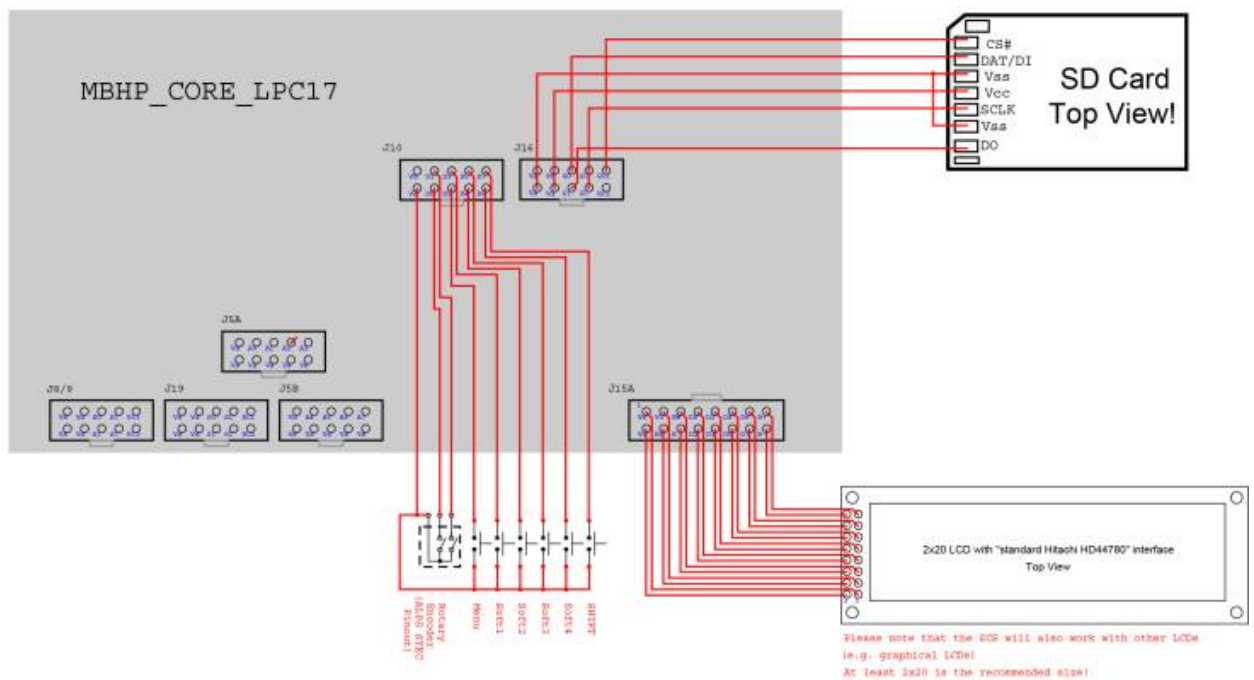
A detented rotary encoder and 6 buttons are directly connected to J10 of the Core module to control the menu system. In addition a LCD is required. The recommended size is at least 2x20! Graphical LCDs (GLCDs) are supported as well.

The [MIDIO128](http://www.midibox.org/dokuwiki/) project uses the same control surface, which means that users who built a MIDIO128 can upload the MIDIBOX NG firmware and control it with their existing hardware, and vice versa!

In the main page (which is active after power-on) it's possible to emulate BUTTON and ENC functions, which means that a very basic MIDI controller with a rotary encoder + 6 buttons could be created without the need to attach a MBHP_DIN module to the core!

Schematic

Wiring Diagram for
MIDibox NG SCS
(C) T. Klose 2013-01-02



SCS PCB

SCS PCB By Illmenator

From:

<http://www.midibox.org/dokuwiki/> - **MIDIbox**

Permanent link:

http://www.midibox.org/dokuwiki/doku.php?id=scs_module&rev=1467058292

Last update: **2016/06/27 20:11**

