

ssm2164_seppoman pcb - getting started - how to setup

the following informations are take from the midibox forum, its a collection of infos, without the claim to be 100% true, i will try to test the given information.

Power

+ GND -

J5 is obviously the only connector where you could come to the conclusion that it might have something to do with power supply. Just like the:

AOUT(NG), the 2044 board, the MB_FM module etc, **it expects a bipolar power supply of +/- 12 V and GND.**

CV

as a general rule of thumb you can assume that everything that doesn't specifically mention a bipolar control voltage will expect an unipolar CV.

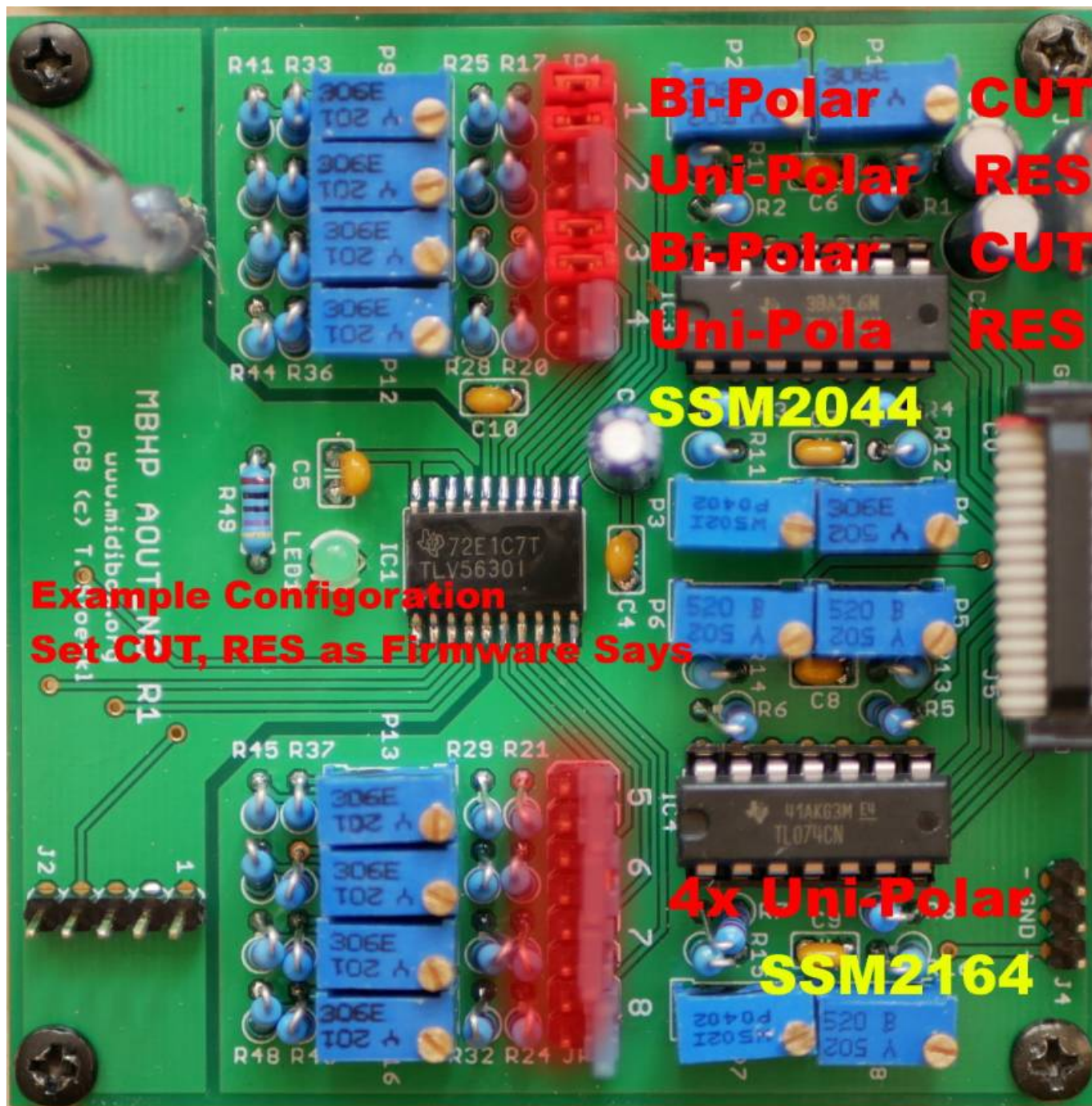
In the case of this module, IIRC the dynamic range of the regular **CV range (0 .. 11.67V)** (uni-polar!) is about 65 dB, with 0V being "silence" and 11.67V being unity gain.

I have never thought about what happens if you apply a negative voltage to the CV input...

Note also that generally a bipolar control voltage (CV) still doesn't mean that there are more than two wires involved, just the one signal can be above or below GND.

AOUT_NG Connect and Setup

Unipolar Jumpering like shown:



AOUT_NG Stuffing Parts PCB

Resistor Solution stock - very low voltage

if you followed [aout_ng](#) built plan you will get following Stock-CV-Voltages @+12V PSU:

Uni-Polar CV-Range: 0-11,4V

Bi-Polar CV-Range: +-3V

SSM2164 & Stock AOUT_NG:

As the SSM2164 is UniPolar, and seppoman designed it as a couple with AOUT_NG. stock is ok

SSM2044 & Stock AOUT_NG:

As the CUT-Off-CV is UniPolar, and seppoman designed it as a couple with AOUT_NG. stock is ok
I guess for proper +/- 5V operation I'll have to try out a few other resistor values on the SSM module, but this will only apply if you're using a different CV source than an AOUT_NG.

If you need more CV-Range: for more distortion, drive, range, or other modules:

if you sum two voltages through two resistors of same value, you'll get $(V1+V2) / 2$ as a result...

Resistor Solution low voltage - seppomans preferred

R9...R16 > 5.6k (only on the channels that are setup for bipolar mode)

+3.5V to +5.8V Bi-Polar calibration range

Pro: easy job, still have a decent precision when calibrating.

Con: "just change the jumpers if you need some channel in bipolar mode" thought will not work. (

 **Fix Me!** really?)

Resistor Solution Stock - -5V Level shifter - NorthernLightX preferred

we came to the conclusion that it's probably much easier to have the AOUT only output **unipolar 0 to 10 volt**, and design **a simple -5v level shifter board** that can be used as an add-on (or separate module with hands-on access to the level shifting) to **shift the output to -5 to +5 volt** where needed.

Things to consider are:

- not a lot of equipment actually makes use of negative voltages
- equipment that needs bipolar CV input can be retrofitted with a fixed level shifter at the input to make it compatible with your other modules
- negative voltages can be used for CV modulation purposes (modulate one CV source with another) so it's certainly not useless

Resistor Solution high voltage

R1...R8 > 10k

R9...R16 > 2.2k (on all channels). (QUESTION WHY ON ALL?

+9.5V to +22V Uni-Polar calibration-range

 **Fix Me!**

+2.4V to +5.5V Bi-Polar calibration-range (dont think so

 **Fix Me!**

Pro: preserve the "just change the jumpers if you need some channel in bipolar mode" thought behind this option.

Con: dramatically increase the calibration range, i.e. exactly calibrating the outputs will get harder because the same angle of turning the pot will have much more impact.

From:

<http://www.midibox.org/dokuwiki/> - **MIDIbox**

Permanent link:

http://www.midibox.org/dokuwiki/doku.php?id=ssm2164_getting_started&rev=1524512273

Last update: **2018/04/23 19:37**

