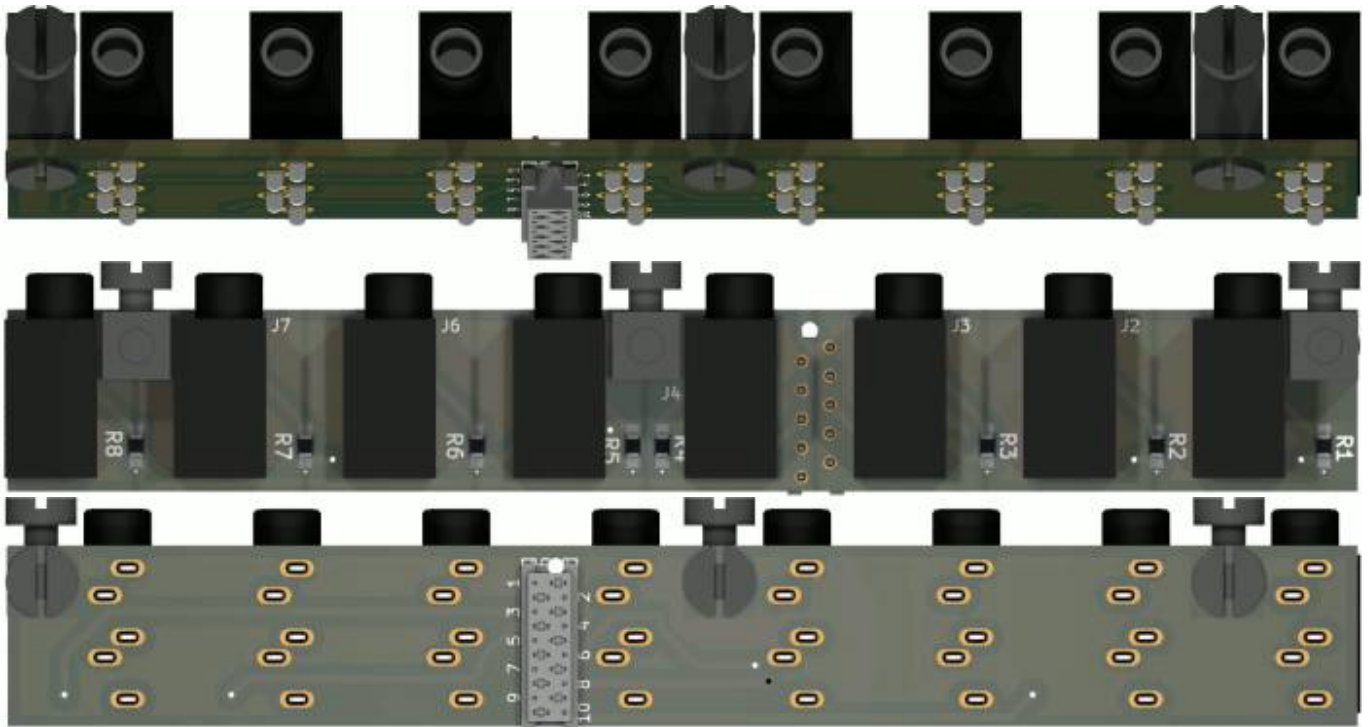
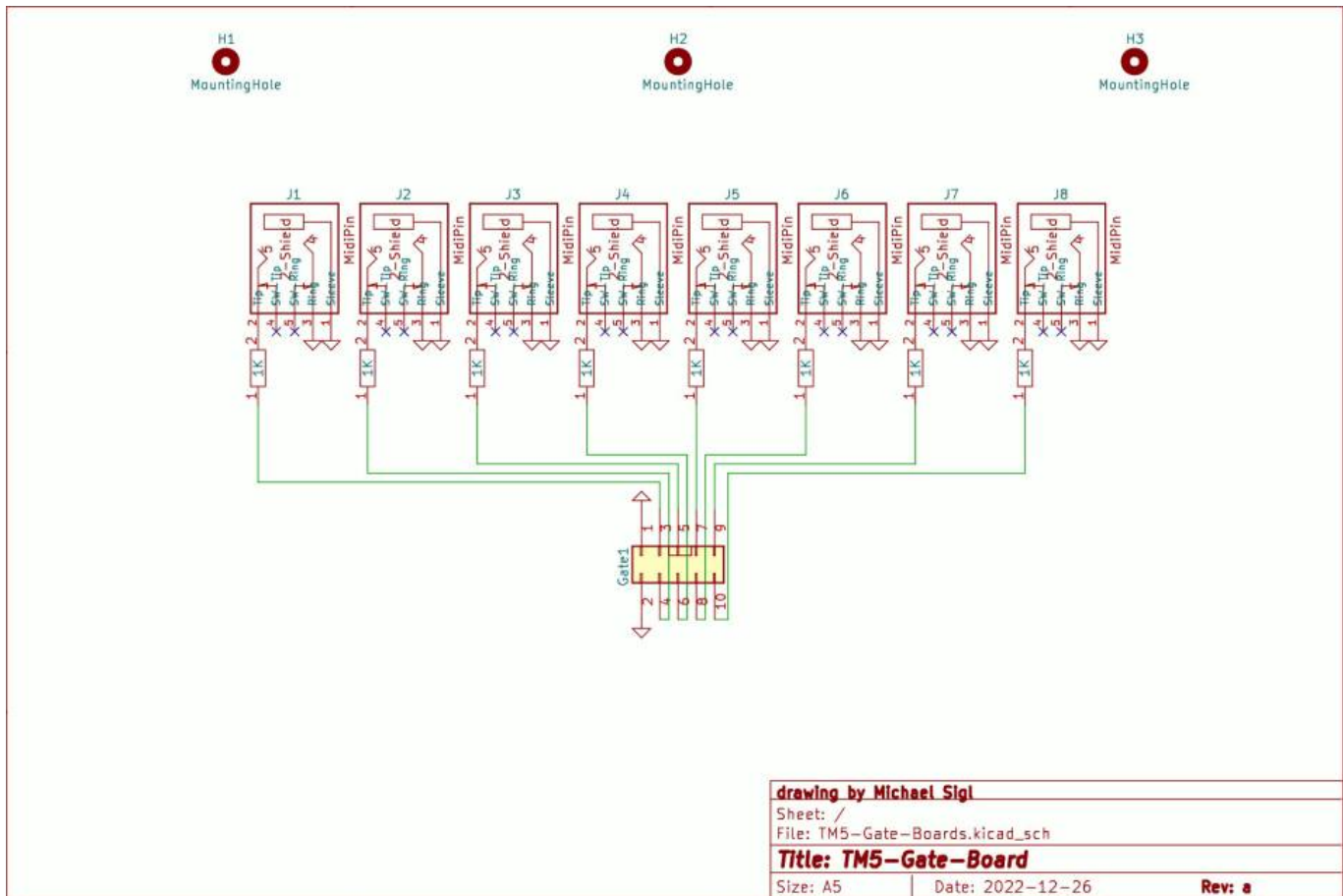


# TM5 Gate-Expansion



This are the Gate In/Out boards, 4 off them are needet to get 16x Gate-input/Trigger, and 16x Gate-Output

## Schematic



# Building and BOM

You need this PCB 4times

## BOM

| qty | reference | value                 | footprint              | MouserPartNr     |
|-----|-----------|-----------------------|------------------------|------------------|
| 1   | Gate1     | Header-2x5-Micromatch | Header-2x5-Micromatch  | 571-1-2178710-0  |
| 8   | J1-J8     | 3.5Jack for Gates     | 3-5JACK-CUI_SJ1-3535NG | 490-SJ1-3535NG   |
| 8   | R1-R8     | 1K                    | R-1K-0805-250mW        | 667-ERJ-P06J102V |

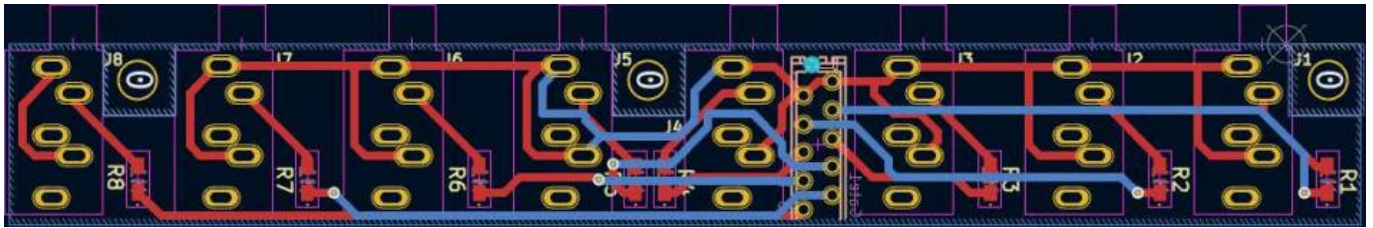
ok this is a list for one PCB, for Triggermatrix you need that 4times!  
copy following list into this [mouser.com-Link](https://www.mouser.com)

```
571-1-2178710-0|4
490-SJ1-3535NG|32
667-ERJ-P06J102V|32
```

**Order from Reichelt:**

## 2xMicromatch-connector 10pin

The 3x Montage Blocks H1,H2,H3 \* 4 = 12 - is already included in the [triggermatrix5](#) - BOM!



## To Do

waiting for Prototype PCB

## Community users working on it

- **Phatline** = PCB & Schematic, UI-Programming, Documentation...

Just let a Private message on the forum to user already involved.  
or join the forum: [Triggermatrix 5](#)

From:  
<http://www.midibox.org/dokuwiki/> - **MIDIbox**

Permanent link:  
<http://www.midibox.org/dokuwiki/doku.php?id=tm5-gate-board&rev=1672258399>

Last update: **2022/12/28 20:13**

