

SCS OLED module

Combination of 0.96" SSD1306 OLEDs and switches for an [SCS](#)

Schematic

BOM v1.0

Type	Part	Value
Caps	C25	DNF
	C26	DNF
	C29	10uF polarised
Encoder	EN1	12mm
	EN2	12mm
Header	J1	PINHD-2X54WALL
	J2	+5V
	J5	PINHD-2X54WALL
OLEDs	LCD1	0.96_OLED
	LCD2	0.96_OLED
	LCD3	0.96_OLED
	LCD4	0.96_OLED
Resistors	R3	DNF
	R4	DNF
	R7	DNF
	R9	2k2
Switches	S1(A)	DT6 or 6mm
	S2(A)	DT6 or 6mm
	S3(A)	DT6 or 6mm
	S4(A)	DT6 or 6mm
	S5(A)	DT6 or 6mm
	S6(A)	DT6 or 6mm

Versions

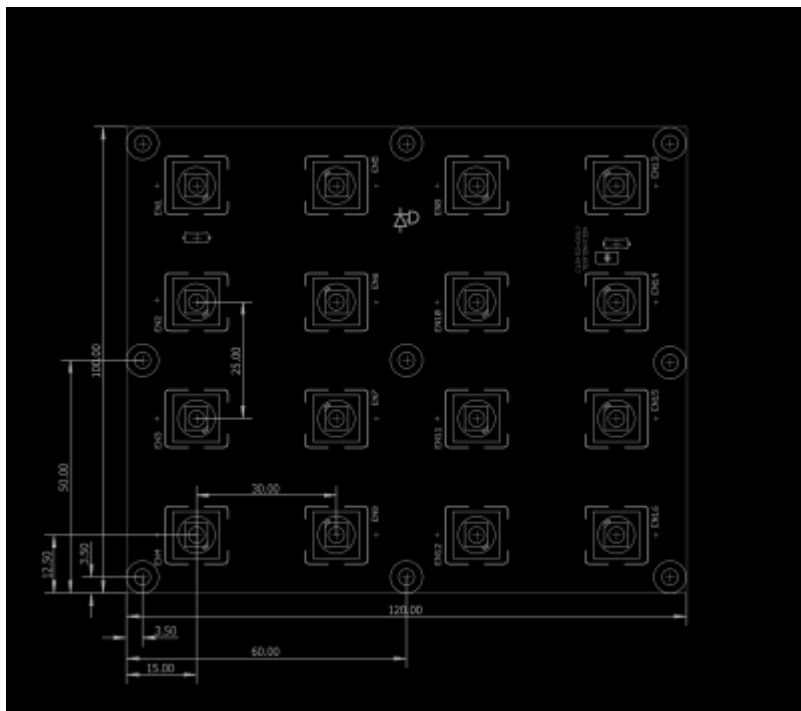
v1.0: first release

Assembly

Interconnections

- J1

Dimensions



encs_dxf.zip

License

Currently the design is © 2016 antilog devices with all rights reserved; all documentation is CC BY-NC-SA 3.0.

From: <http://www.midibox.org/dokuwiki/> - **MIDIbox**

Permanent link: http://www.midibox.org/dokuwiki/doku.php?id=enc_4_4&rev=1520322337

Last update: **2018/03/06 07:45**

