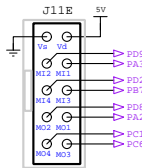
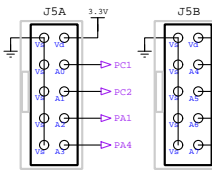
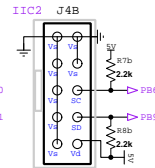
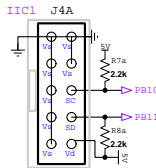


General Purpose I/Os

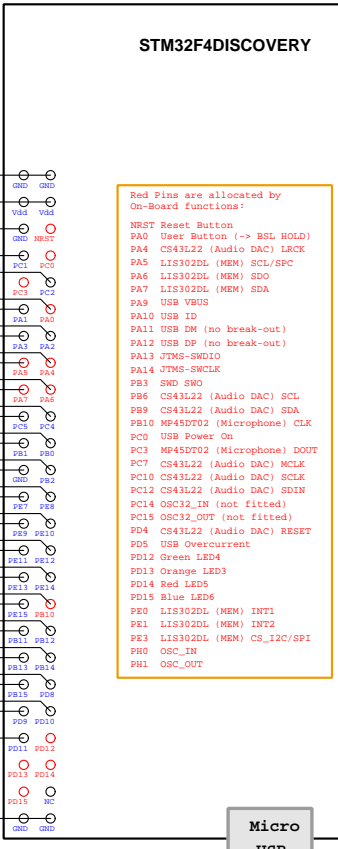
No Typo: J10A is assigned to upper PExx pins  
J10B (a new port) is assigned to various other free pins



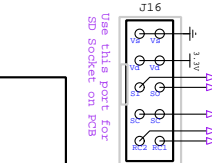
MIDI INs/OUTs New "extended" Socket Layout



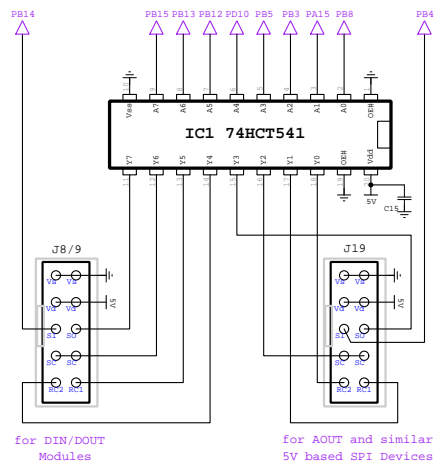
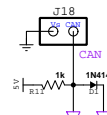
Analog Inputs and/or alternative digital I/Os



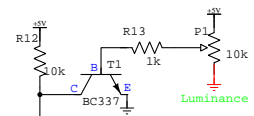
- Red Pins are allocated by On-Board functions:
- NRST Reset Button
  - PA0 User Button (-> BSL HOLD)
  - PA4 CS43L22 (Audio DAC) LRCK
  - PA5 LIS302DL (MEM) SCL/SPC
  - PA6 LIS302DL (MEM) SDO
  - PA7 LIS302DL (MEM) SDA
  - PA9 USB VBUS
  - PA10 USB ID
  - PA11 USB DM (no break-out)
  - PA12 USB DP (no break-out)
  - PA13 J7MS-SWDIO
  - PA14 J7MS-SWCLK
  - PB3 SWD SWO
  - PB6 CS43L22 (Audio DAC) SCL
  - PB9 CS43L22 (Audio DAC) SDA
  - PB10 MP45DT02 (Microphone) CLK
  - PC0 USB Power On
  - PC3 MP45DT02 (Microphone) DOUT
  - PC7 CS43L22 (Audio DAC) MCLK
  - PC10 CS43L22 (Audio DAC) SCLK
  - PC12 CS43L22 (Audio DAC) SDIN
  - PC14 OSC3\_IN (not fitted)
  - PC15 OSC3\_OUT (not fitted)
  - PD4 CS43L22 (Audio DAC) RESET
  - PD5 USB Overcurrent
  - PD12 Green LED4
  - PD13 Orange LED3
  - PD14 Red LED5
  - PD15 Blue LED6
  - PE0 LIS302DL (MEM) INT1
  - PE1 LIS302DL (MEM) INT2
  - PE3 LIS302DL (MEM) CS\_12C/SP1
  - PH0 OSC\_IN
  - PH1 OSC\_OUT



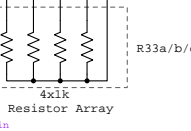
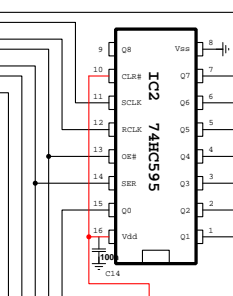
For SD Card and similar 3.3V SPI Devices



for DIN/DOUT Modules



LCD Voltage Option



Resistor Array

MIDibox Hardware Platform  
MBHP\_CORE\_STM32F4  
(C) T. Klose 2013-10-19