

# BANDMASTER

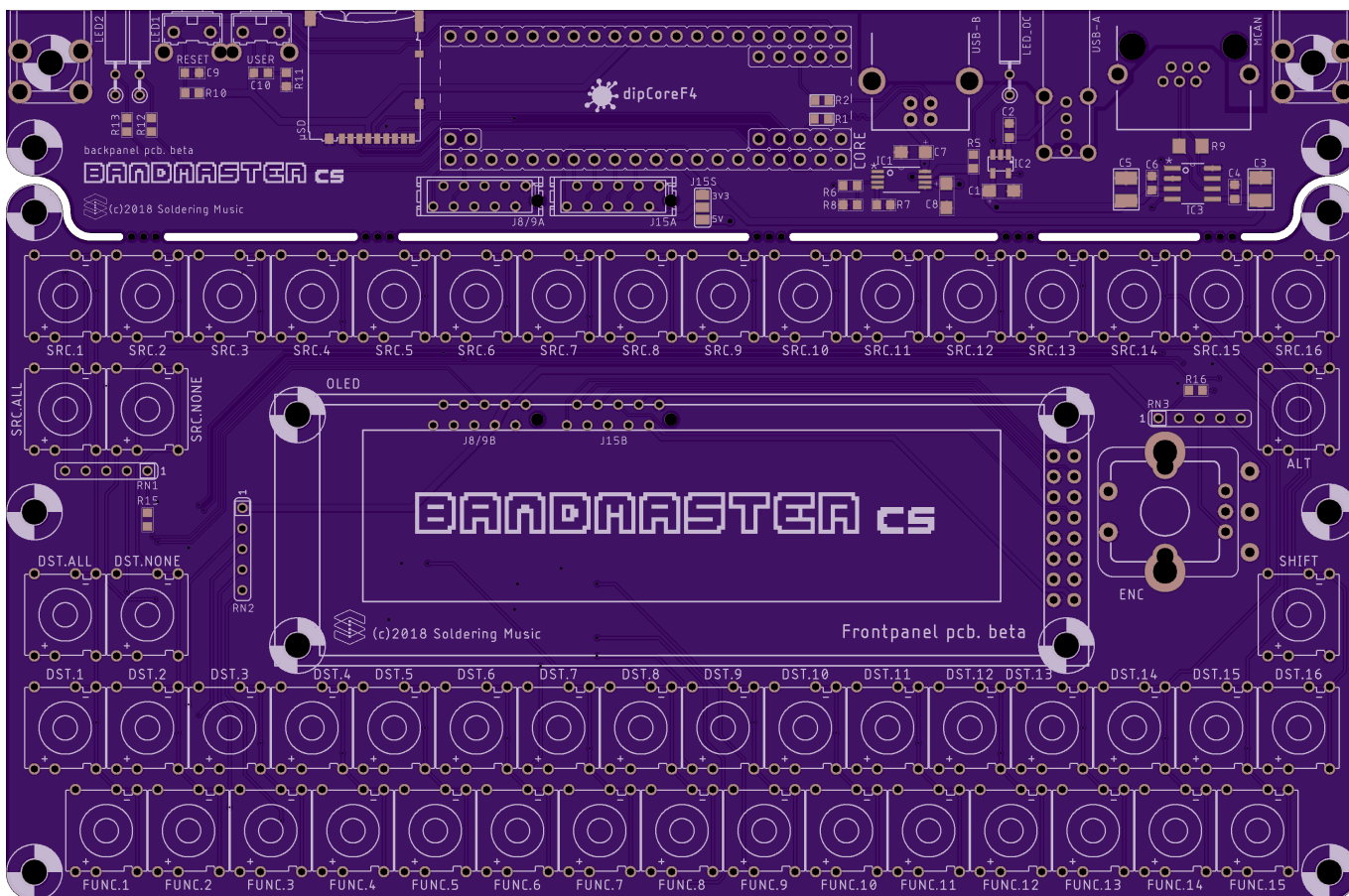
## MIDI Routing System and Control Surface.

Scalable MIDI Routing application using the MCAN and the M16 Interface...

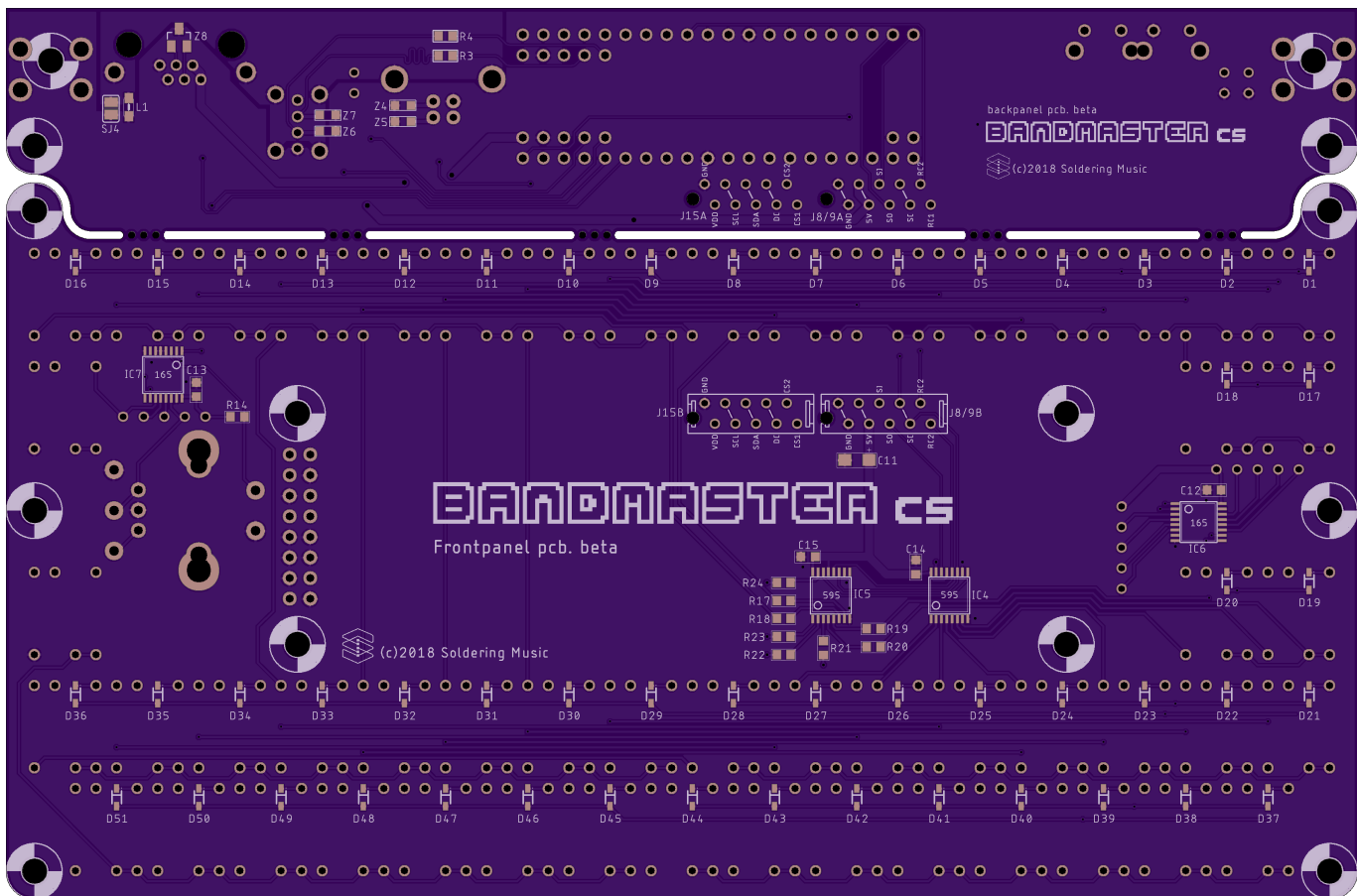
### Bandmaster CS

The Remote Control.

### Top



### Bottom



## BOM

version 1. Mouser BOM: [ToDo](#)

Qty	Value	Package	Parts	Mouser	Reichelt	Conrad	Other	Notes
<b>Resistors</b>								
4	22R 5%	0603	R1, R2, R3, R4					
1	680R 5%	0603	R5					Depends on Led
<b>PTC fuses, resettable thermistors</b>								
1	1206L150THWR	1206	F1	<a href="#">576-1206L150THWR</a>				
<b>Capacitors</b>								
1	100n	0603	C2					
1	4,7u	SMC_A	C1					
<b>ESD Suppressors / TVS Diodes</b>								
7	CG0603MLC-05E	0603	Z1, Z2, Z3, Z4, Z5, Z6, Z7	<a href="#">652-CG0603MLC-05E</a>				
<b>Ferrite Bead</b>								
1	BLM21	0805	L1	<a href="#">81-BLM21P331SG</a>				
<b>LEDs</b>								
1	-	0805 or THT	LED_OC					2x5mm rectangular THT

Qty	Value	Package	Parts	Mouser	Reichelt	Conrad	Other	Notes
<b>Resistors</b>								
<b>Transistor</b>								
1	FDN304P	SSOT-3	Q1	<a href="#">512-FDN304P</a>				P-Channel MOSFET
<b>IC</b>								
1	STMP52161STR	SOT23-5L	IC1	<a href="#">511-STMP52161STR</a>				Power Switch IC
<b>Connectors</b>								
1	mini-USB	THT	MINI-USB	<a href="#">571-1734510-1</a>				
1	USB-B	THT	USB-B	<a href="#">538-67068-8000</a>				
1	USB-A	THT	MINI-A	<a href="#">538-48204-0001</a>				
1	micro-match 2x4	Female	J2A	<a href="#">571-7-215079-8</a> or <a href="#">571-2178710-8</a> (value line)				
1	micro-match 2x6	Female	J1A	<a href="#">571-8-215079-2</a> or <a href="#">571-1-2178710-2</a> (value line)				
<b>Others</b>								
2	Screw terminal	-	-	<a href="#">534-7790</a>				

ToDo

From:

<https://www.midibox.org/dokuwiki/> - **MIDIbox**

Permanent link:

<https://www.midibox.org/dokuwiki/doku.php?id=bandmaster&rev=1538823774>

Last update: **2018/10/06 11:02**

