

BANDMASTER

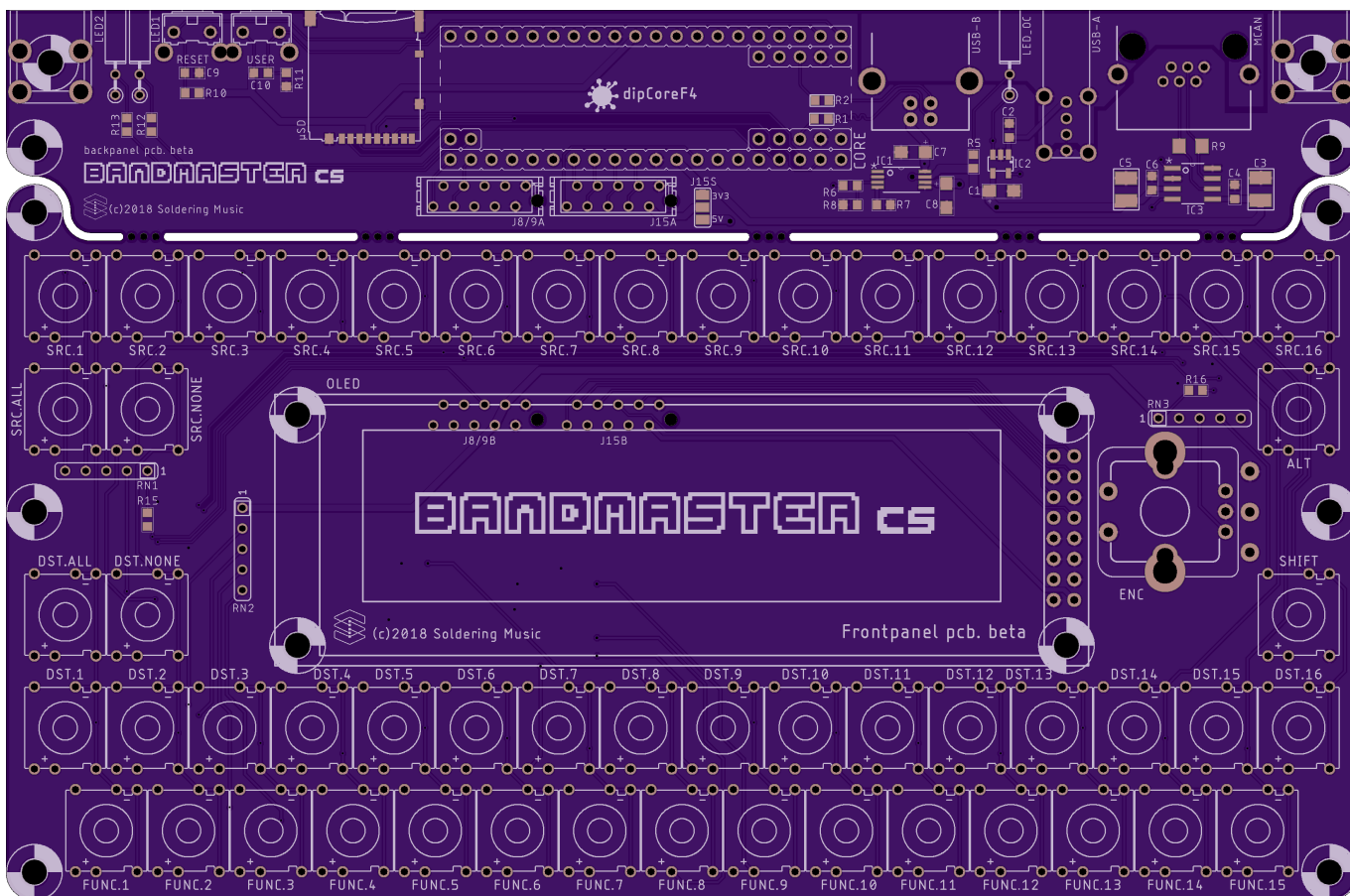
MIDI Routing System and Control Surface.

Scalable MIDI Routing application using the MCAN and the M16 Interface...

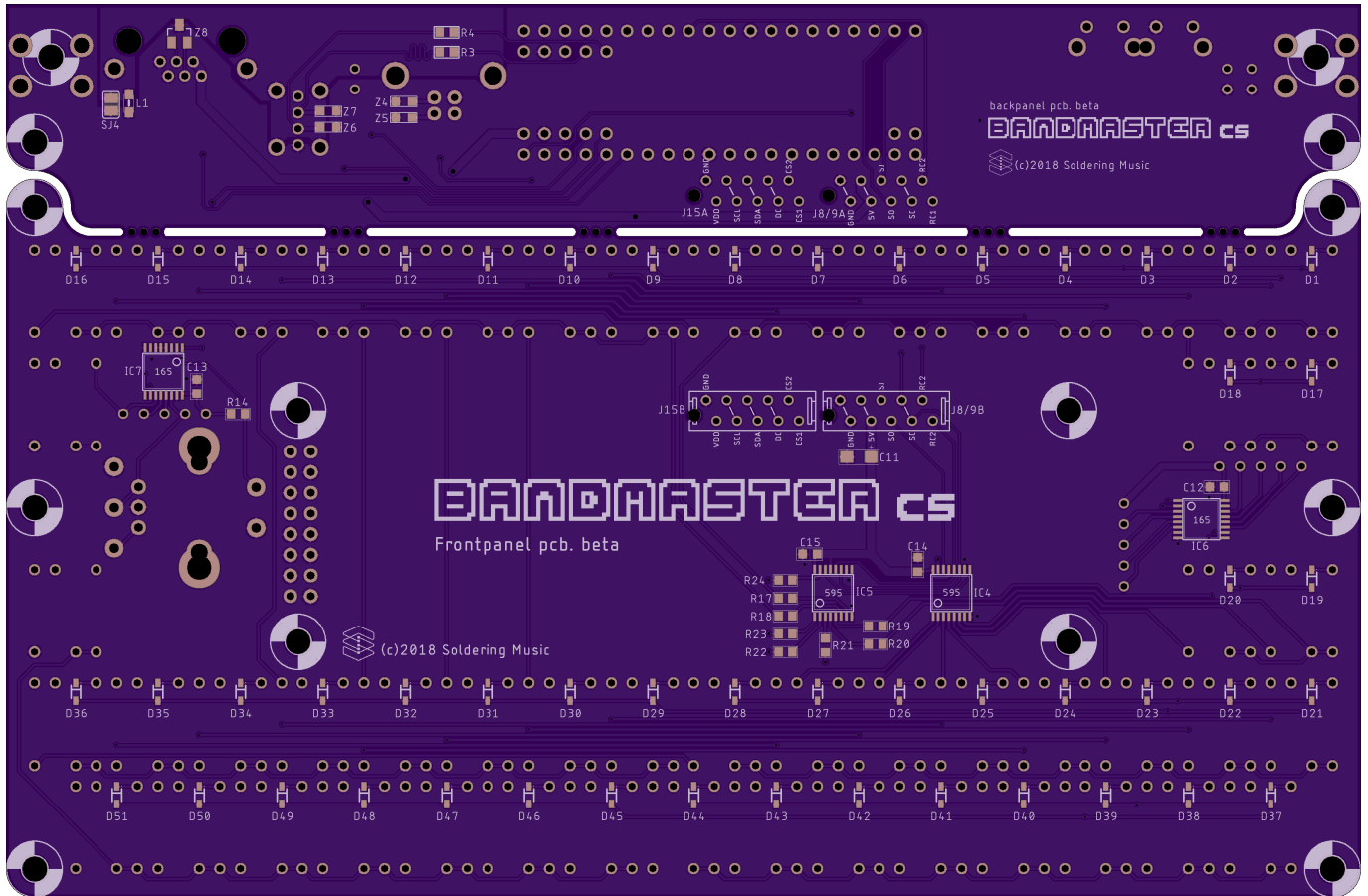
Bandmaster CS

The Remote Control.

Top



Bottom



BOM

version 1. Mouser BOM: [ToDo](#)

Qty	Value	Package	Parts	Mouser	Reichelt	Conrad	Other	Notes
Resistors								
4	22R 5%	0603	R1, R2, R3, R4					
3	680R 5%	0603	R5, R12, R13					Depends on Led
1	120R 5%	1206	R9					
8	220R 5%	0603	R17, R18, R19, R20, R21, R22, R23, R24					
1	400R 5%	0603	R7					
5	10K 5%	0603	R6, R8, R14, R15, R16					
2	100K 5%	0603	R10, R11					
Resistors Network								
3	10K 5%	DIL5	RN1, RN2, RN3					
Capacitors								

Qty	Value	Package	Parts	Mouser	Reichelt	Conrad	Other	Notes
Resistors								
9	100n	0603	C2, C4, C6, C9, C10, C12, C13, C14, C15					
2	1u	3225	C3, C5					
4	4,7u	SMC_A	C1, C7, C8, C11					
ESD Suppressors / TVS Diodes								
4	CG0603MLC-05E	0603	Z1, Z2, Z3, Z4	652-CG0603MLC-05E				
1	PESD1CAN	SOT23	Z5	771-PESD1CAN-T/R				
Ferrite Bead								
1	BLM21	0805	L1	81-BLM21P331SG				
Diodes								
51	1N4148WS	SOD323-W	D1, D2, D3, D4, D5, D6, D7, D8, D9, D10, D11, D12, D13, D14, D15, D16, D17, D18, D19, D20, D21, D22, D23, D24, D25, D26, D27, D28, D29, D30, D31, D32, D33, D34, D35, D36, D37, D38, D39, D40, D41, D42, D43, D44, D45, D46, D47, D48, D49, D50, D51	512-1N4148WS				Only if you use CAN without transceiver
LEDs								
3	-	THT	LED1, LED2, LED_OC					2x5mm rectangular THT
OLED Screen								
1	ER-OLEDM032-1W		OLED	ER-OLEDM032-1W				buydisplay SSD1322
IC								
1	TPS2113APWR	SOT23-5L	IC1	595-TPS2113APWR				Power Switch IC
1	STMPS2161STR	SOT23-5L	IC2	511-STMPS2161STR				Power Switch IC

Qty	Value	Package	Parts	Mouser	Reichelt	Conrad	Other	Notes
Resistors								
1	TCAN1042GV	SOIC8	IC3	595-TCAN1042GVDRQ1				CAN tranceiver
2	74HC595	TSSOP-16	IC4, IC5	595-SN74HC595PWR				
2	74HC165	TSSOP-16	IC6, IC7	595-SN74HC165PWR				
Switches and Encoder								
2	B3F-31xx	-	USER, RESET	653-B3F-3122				

Qty	Value	Package	Parts	Mouser	Reichelt	Conrad	Other	Notes
Resistors								
53	MEC_5GTH or MEC_3FTH	-	ALT, DST.1, DST.2, DST.3, DST.4, DST.5, DST.6, DST.7, DST.8, DST.9, DST.10, DST.11, DST.12, DST.13, DST.14, DST.15, DST.16, DST.ALL, DST.NONE, FUNC.1, FUNC.2, FUNC.3, FUNC.4, FUNC.5, FUNC.6, FUNC.7, FUNC.8, FUNC.9, FUNC.10, FUNC.11, FUNC.12, FUNC.13, FUNC.14, FUNC.15, SHIFT, SRC.1, SRC.2, SRC.3, SRC.4, SRC.5, SRC.6, SRC.7, SRC.8, SRC.9, SRC.10, SRC.11, SRC.12, SRC.13, SRC.14, SRC.15, SRC.16, SRC.ALL, SRC.NONE	642-5GTH92061 or 642-3FTH9Q				+ 3mm leds for 3FTH
1	PEC12R	-	ENC	652-PEC12R-4217F-S24				
Connectors								
1	USB-B	THT	USB-B	538-67068-8000				

Qty	Value	Package	Parts	Mouser	Reichelt	Conrad	Other	Notes
Resistors								
1	USB-A	THT	USB-A	538-48204-0001				
1	RJE0166201	single RJ11 6p6c	MCAN	523-RJE01-662-01				
2	micro-match 2x5	Female	J8/9A, J15A	571-12150790 or 571-1-2178710-0 (value line)				
2	micro-match 2x5	IDC	J8/9B, J15B	571-8-215570-0				Paddle board
1	DM3AT-SF-PEJM5	Socket	micro-SD	571-8-215079-4				with push-push
Others								
2	Screw terminal	-	-	534-7790				

ToDo

From: <https://www.midibox.org/dokuwiki/> - **MIDIbox**

Permanent link: <https://www.midibox.org/dokuwiki/doku.php?id=bandmaster&rev=1538830912>

Last update: **2018/10/06 13:01**

