

BANDMASTER

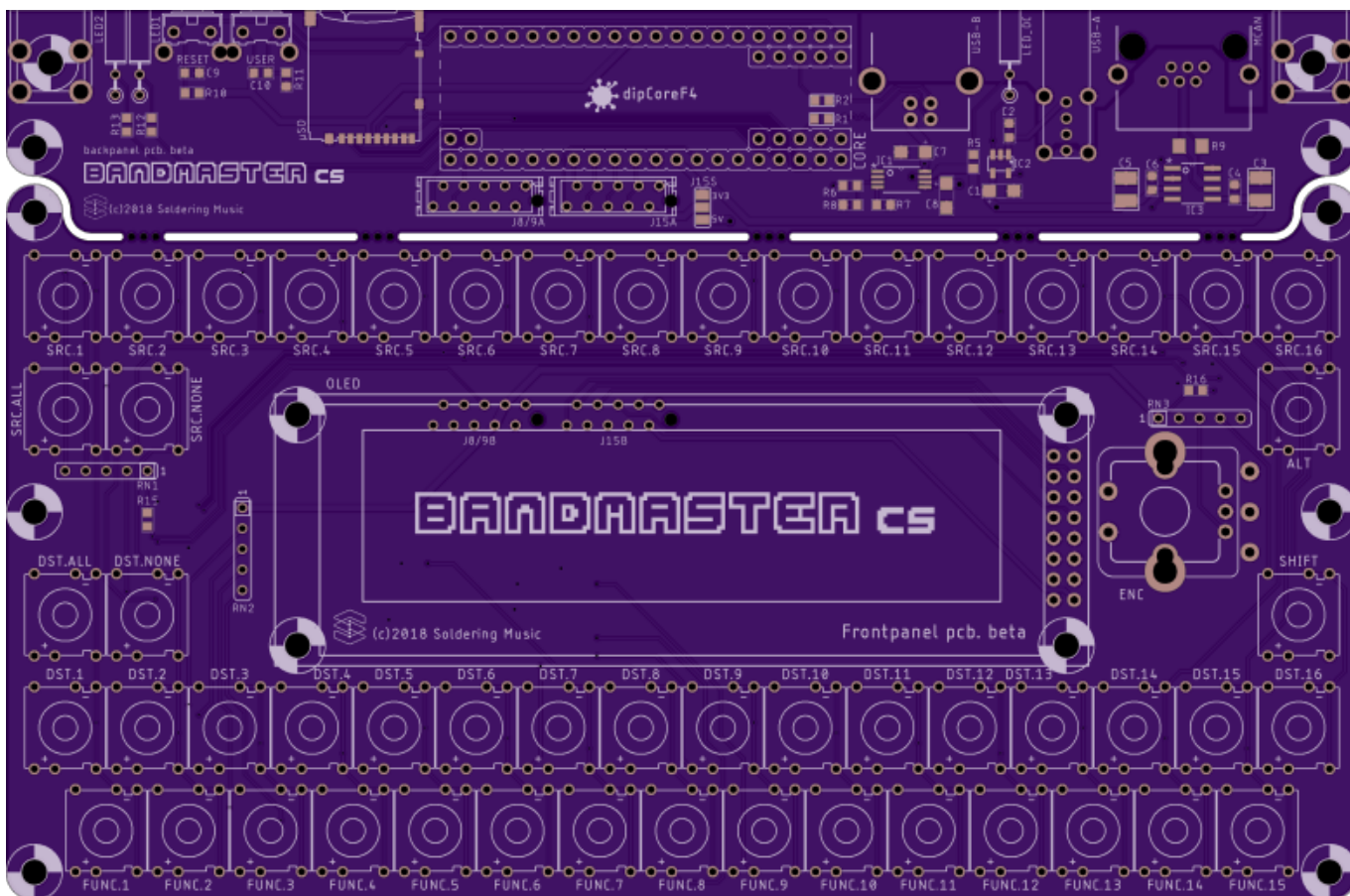
MIDI Routing System and Control Surface.

Scalable MIDI Routing application using the MCAN and the M16 Interface...

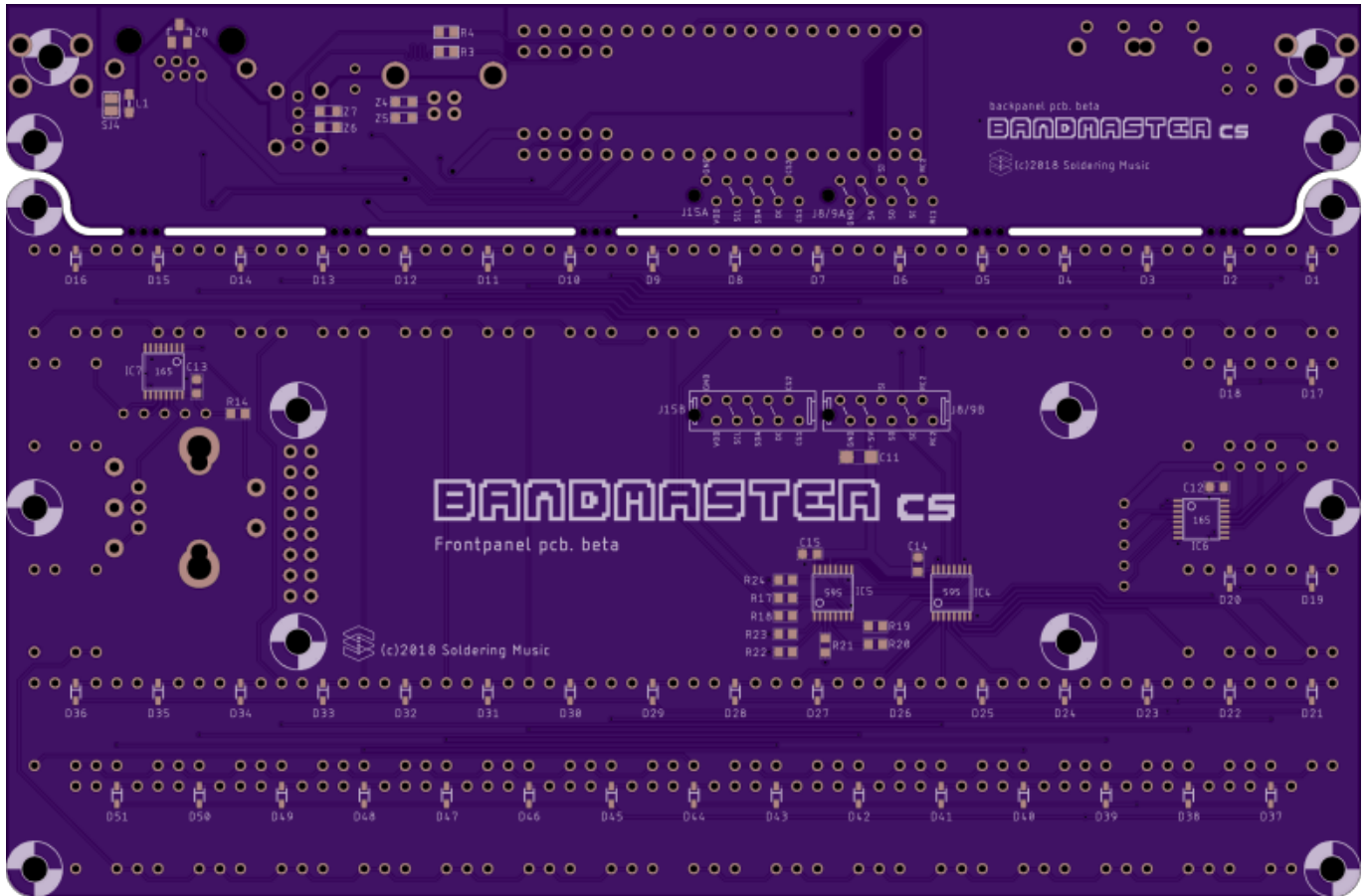
Bandmaster CS

The Remote Control.

Top



Bottom



BOM

Mouser BOM version 1. to complete

Qty	Value	Package	Parts	Mouser	Reichelt	Conrad	Other	Notes
Resistors								
4	22R 5%	0603	R1, R2, R3, R4	667-ERJ-PA3J220V				
1	120R 1%	1206	R9	71-CRCW1206120RFKEAC				
8	220R 5%	0603	R17, R18, R19, R20, R21, R22, R23, R24	755-ESR03EZPJ221				
1	470R 5%	0603	R7	755-ESR03EZPJ471				
3	680R 5%	0603	R5, R12, R13	667-ERJ-PA3J681V				Depends on Led
5	10K 5%	0603	R6, R8, R14, R15, R16	755-ESR03EZPJ103				
2	100K 5%	0603	R10, R11	755-ESR03EZPJ104				
Resistors Network								
3	10K 5%	DIL5	RN1, RN2, RN3	858-L051S103LF				
Capacitors								
9	100n	0603	C2, C4, C6, C9, C10, C12, C13, C14, C15	710-885012206071				
2	1u	1210	C3, C5	710-885012209047				
4	4,7u Tantalum	SMC_A(1206)	C1, C7, C8, C11	647-F931C475MAA				
ESD Suppressors / TVS Diodes								
4	CG0603MLC-05E	0603	Z1, Z2, Z3, Z4	652-CG0603MLC-05E				
1	PESD1CAN	SOT23	Z5	771-PESD1CAN-T/R				
Ferrite Bead								
1	BLM21	0805	L1	81-BLM21P331SG				
Diodes								

Qty	Value	Package	Parts	Mouser	Reichelt	Conrad	Other	Notes
Resistors								
51	1N4148WS	SOD323-W	D1, D2, D3, D4, D5, D6, D7, D8, D9, D10, D11, D12, D13, D14, D15, D16, D17, D18, D19, D20, D21, D22, D23, D24, D25, D26, D27, D28, D29, D30, D31, D32, D33, D34, D35, D36, D37, D38, D39, D40, D41, D42, D43, D44, D45, D46, D47, D48, D49, D50, D51	512-1N4148WS				Only if you use CAN without transceiver
LEDs								
3	-	THT	LED1, LED2, LED_OC					2x5mm rectangular THT
OLED Screen								
1	ER-OLEDM032-1W		OLED	ER-OLEDM032-1W				buydisplay SSD1322
IC								
1	TPS2113APWR	SOT23-5L	IC1	595-TPS2113APWR				Power Switch IC
1	STMP52161STR	SOT23-5L	IC2	511-STMP52161STR				Power Switch IC
1	TCAN1042GV	SOIC8	IC3	595-TCAN1042GVDRQ1				CAN transceiver
2	74HC595	TSSOP-16	IC4, IC5	595-SN74HC595PWR				
2	74HC165	TSSOP-16	IC6, IC7	595-SN74HC165PWR				
Switches and Encoder								
2	B3F-31xx	-	USER, RESET	653-B3F-3122				
53	MEC_5GTH or MEC_3FTH	-	ALT, DST.1, DST.2, DST.3, DST.4, DST.5, DST.6, DST.7, DST.8, DST.9, DST.10, DST.11, DST.12, DST.13, DST.14, DST.15, DST.16, DST.ALL, DST.NONE, FUNC.1, FUNC.2, FUNC.3, FUNC.4, FUNC.5, FUNC.6, FUNC.7, FUNC.8, FUNC.9, FUNC.10, FUNC.11, FUNC.12, FUNC.13, FUNC.14, FUNC.15, SHIFT, SRC.1, SRC.2, SRC.3, SRC.4, SRC.5, SRC.6, SRC.7, SRC.8, SRC.9, SRC.10, SRC.11, SRC.12, SRC.13, SRC.14, SRC.15, SRC.16, SRC.ALL, SRC.NONE	642-5GTH92061 or 642-3FTH9Q				+ 3mm leds for 3FTH
1	PEC12R	-	ENC	652-PEC12R-4217F-S24				
Connectors								
1	USB-B	THT	USB-B	538-67068-8000				
1	USB-A	THT	USB-A	538-48204-0001				
1	RJE0166201	single RJ11 6p6c	MCAN	523-RJE01-662-01				
2	micro-match 2x5	Female	J8/9A, J15A	https://www.mouser.fr/ProductDetail/TE-Connectivity-AMP/1-215079-0?qs=sGAEpiMZZMvIX3nhDDO4AD0YxAKLygYct7VkiBsEv0l%3d				

571-12150790]] or [571-1-2178710-0](#)(value line) || || ||

2	micro-match 2x5	IDC	J8/9B, J15B	571-8-215570-0		Paddle board
---	-----------------	-----	-------------	--------------------------------	--	--------------

1	DM3AT-SF-PEJM5	Socket	micro-SD	571-8-215079-4		with push-push
Others						
2	Screw terminal	-	-	534-7790		

ToDo

From:
<https://www.midibox.org/dokuwiki/> - **MIDIbox**

Permanent link:
<https://www.midibox.org/dokuwiki/doku.php?id=bandmaster&rev=1538986764>

Last update: **2018/10/08 08:19**

