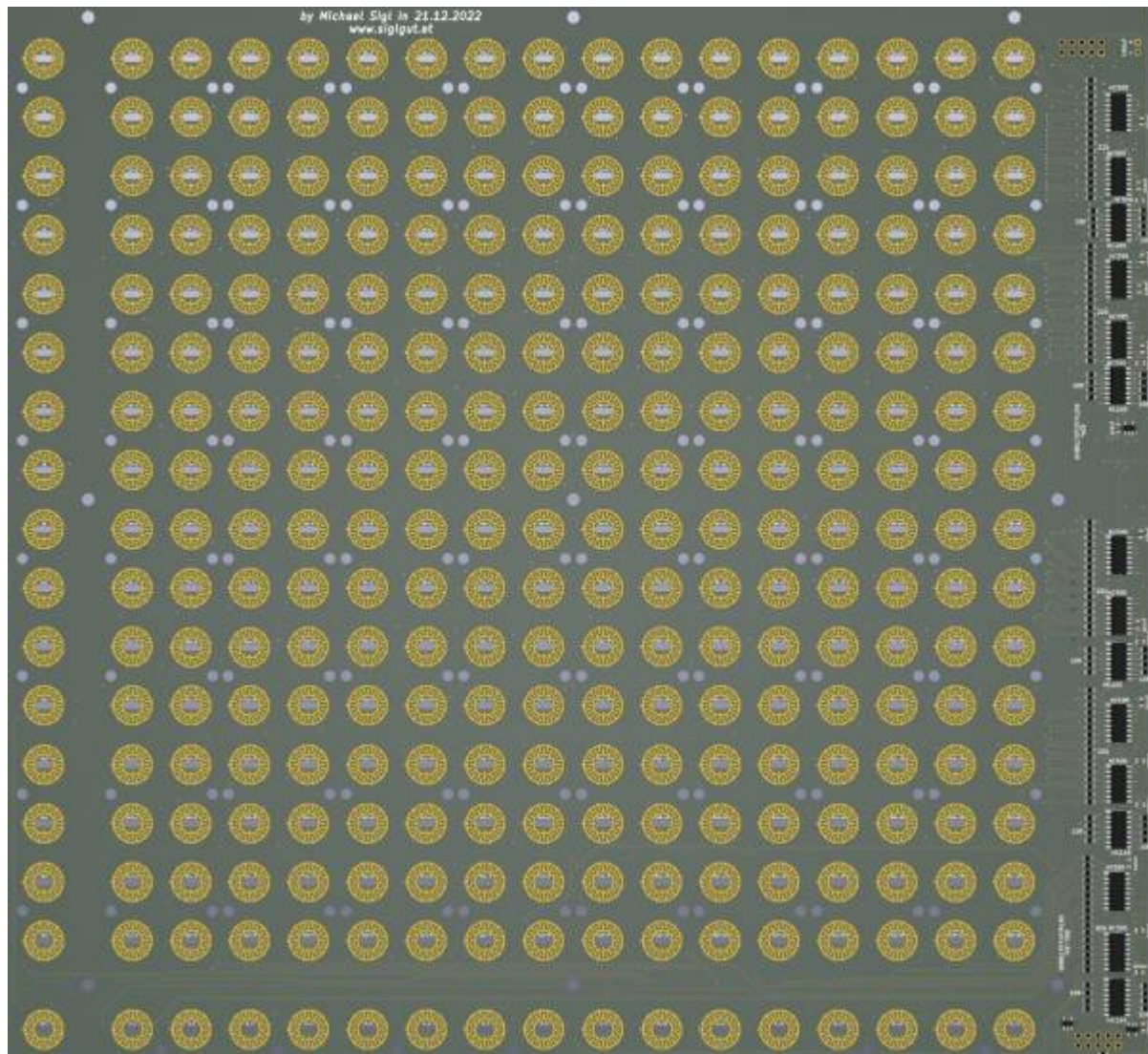


# BLM16x16+X V2 - Board





Since i need need a BLM16x16+X for my [triggermatrix5](#) And since Latigid ONs BLM is sold out [blm16x16\\_build\\_guide...](#) (and those 1N4148 Thruholes nightmare..)

I made this new Version, based on Latigids Shematical Improvements.

## Schematic

[blm16x16-schematic.pdf](#)

## Building and BOM

The Values are printet on the PCB.

[blm16x16-pcb-back.pdf](#)

[blm16x16-pcb-front.pdf](#)

**Following Quantity is for 1 PCB, Mouser:**

open following link: <https://www.mouser.com/tools/part-list-import.aspx>

**& copy past follwong list:**

595-SN74LVC1G17DBVR|12  
80-C0805C104M5R|32  
710-860010273011|1  
512-BAT54|34  
595-SN74HC165DR|15  
595-SN74HC595DR|5  
710-61201021621|2  
512-BC81840MTF|34  
660-RK73B2ATTD102J|34  
660-RK73B2ATTD103J|75  
603-RC0805JR-13220RL|40  
660-RK73H2ATTD56R0F|40  
604-APTR3216ZGC|300  
604-APTR3216QBC/D|300  
833-1N4148WL2-TP|150

**19x Silicone Elastomer 4x4**

## To Do

make a Frontpanel.

## Community users working on it

- **Phatline** = PCB & Schematic, UI-Programming, Documentation...

Just let a Private message on the forum to user already involved.  
or join the forum: [daw-controller-ableton](#)

From:

<https://www.midibox.org/dokuwiki/> - **MIDIbox**

Permanent link:

<https://www.midibox.org/dokuwiki/doku.php?id=blm16x16v2&rev=1671406996>

Last update: **2022/12/18 23:43**

