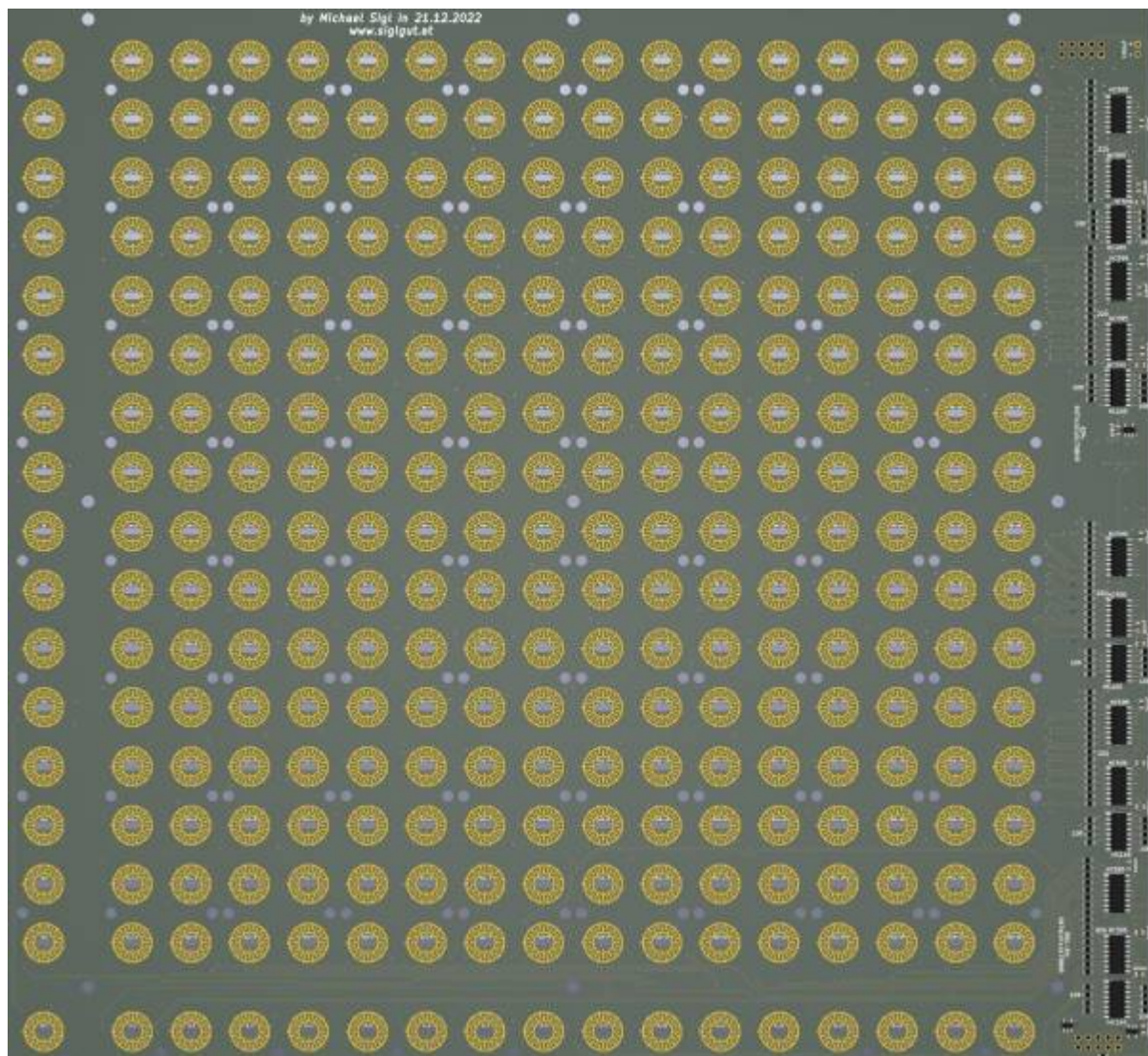


BLM16x16+X V2 - Board





for [TriggerMatrix4](#) i used Latigid ONs PCB: [blm16x16_build_guide](#), but i had only 2 PCBs, one for me, and one finally got Maxim Anokhin (Limewax), in order to get more Triggermatrices into the world I made my own Version for the upcoming [triggermatrix5](#)

Schematic

[blm16x16-schematic.pdf](#)

Building and BOM

The Values are printet on the PCB.

[blm16x16-pcb-back.pdf](#)

[blm16x16-pcb-front.pdf](#)

Following Quantity is for 1 PCB, Mouser:

open following link: <https://www.mouser.com/tools/part-list-import.aspx>

& copy past follwong list:

595-SN74LVC1G17DBVR|12
80-C0805C104M5R|32
710-860010273011|1
863-BAT54LT1G|34
595-SN74HC595DR|15
595-SN74HC165DT|5
710-61201021621|2
863-BC818-40LT1G|34
660-RK73B2ATTD102J|34
660-RK73B2ATTD103J|75
603-RC0805JR-13220RL|40
660-RK73H2ATTD56R0F|40
604-APTR3216ZGC|300
604-APTR3216QBC/D|300
833-1N4148WL2-TP|150

19x Silicone Elastomer 4x4

To Do

waiting for the Prototype to come, then solder thousands off components

Community users working on it

- **Phatline** = PCB & Schematic, UI-Programming, Documentation...

Just let a Private message on the forum to user already involved.
or join the forum: [Triggermatrix 5](#)

From:

<https://www.midibox.org/dokuwiki/> - **MIDIbox**

Permanent link:

<https://www.midibox.org/dokuwiki/doku.php?id=blm16x16v2&rev=1672085521>

Last update: **2022/12/26 20:12**

