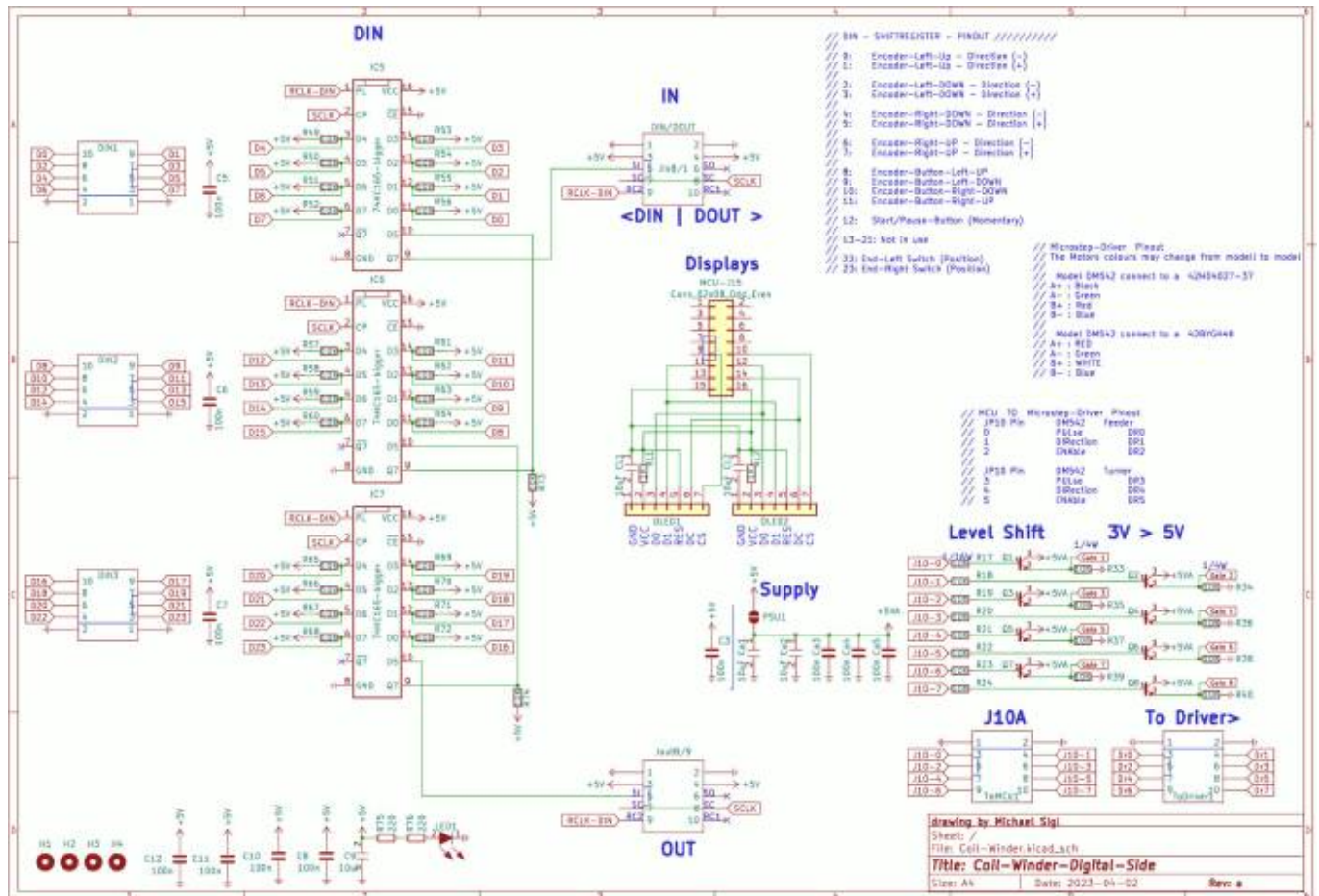




5. If the Machine is not detected by mios studio, and you already checked the usb-connections, the device or the code is broken, for that you may search for “Bootload Switch”, please set it to “bLOAD”, now you can upload new & unbroken codes, dont forget to set it to “normal” back again - after upload new code - else the APP will not boot...

# BUILD

## Shemata



The Rest is stated in the youtube video, in TimeLapse

## Community users working on it

- **Phatline** = Programming, Documentation, Hardware-Prototype, Testing, Winding

## Getting Involved ?

Just let a Private message on the forum to user already involved

From:

<https://www.midibox.org/dokuwiki/> - **MIDIbox**

Permanent link:

<https://www.midibox.org/dokuwiki/doku.php?id=coilwinder&rev=1680466127>

Last update: **2023/04/02 20:08**

