

CV-1

CV-Recorder/Looper & CV-Generator

Control Voltage Recorder, Looper, and Generator - for a own Eurorack-Line... more in Future!



-this picture is the first prototype - pre-Eurorack



Features

- * A Envelope which can be Recored from an AIN-Source, it can be Editet on Startpoint,ATK-Playbackrate, Decay-Playbackrate
- * LFO which Waveform is stepless morphable from Sine Square Tri Saw-Up to Saw-Down...(only Clocksynced!)
- * MSQ MotionSequencer to loop a CV-Signal.
- * A Mixer Page which Mixes/Mutes ENV+LFO+MSQ - and scales the output CV
- * Copy, Paste, Clear: to Transfair the CV Sequence to other CV1 Instances
- * ProgramChange Load and Store on microSD-Card, Load and Store are CC-Commands, so you can remote the device
- * The Sequencer can be set to Tact Systems: 3/4 4/4 5/4 7/4 9/4 11/4 13/4

Hardware Requirements

Midibox:


- [dipcoref4](#) - this is the μ C Brain for CV1
- no other PCBs needet - but expandable with other Eurorackmodules in Future

- μ SD-Card, formatted with FAT32
- Soldering Iron - with a Dip that can Handle SMD-Parts, Wires, solder Paste for the μ C....
- Eurorack Power Source +-12V AND +5V!

Set

Cabeling

Midi IN1 »> CV1 Remote Device or a Midi-Sequencer

Midi OUT »> to a Global CV1 Remote Device  - which will need a lot of Midiinputs [M16?](#)

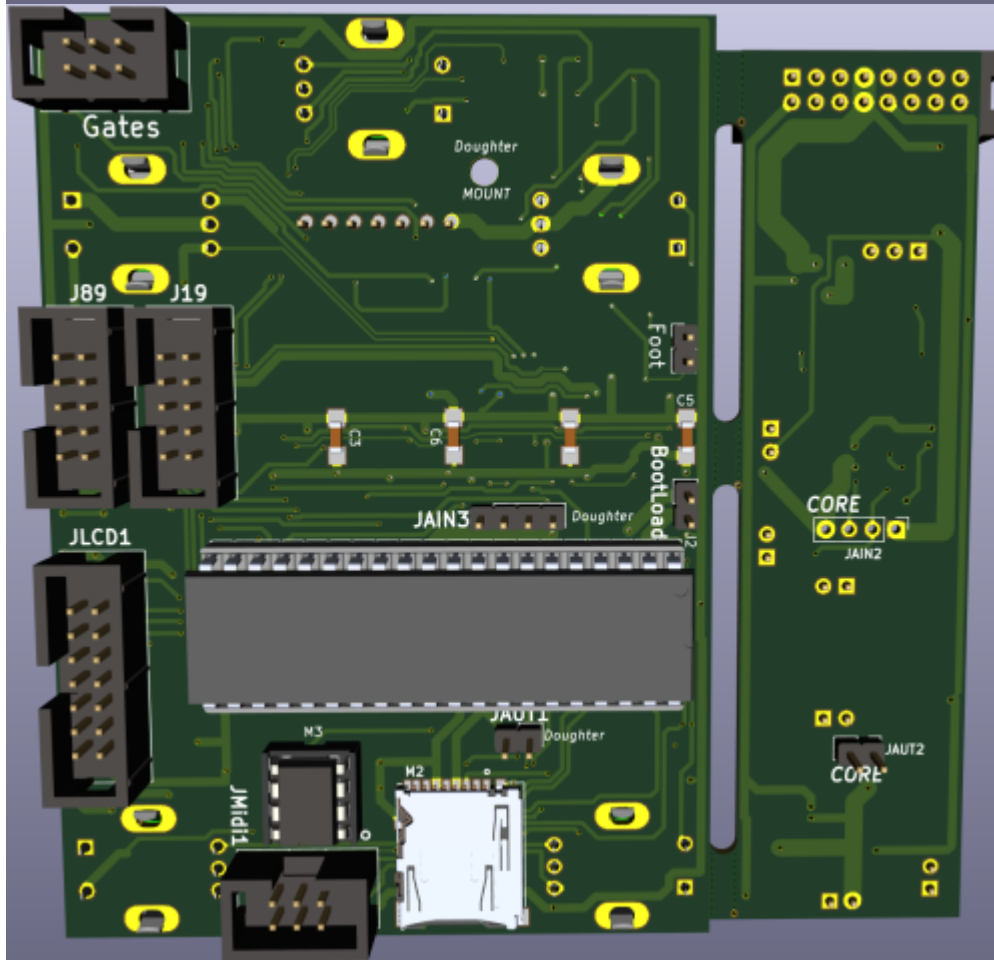
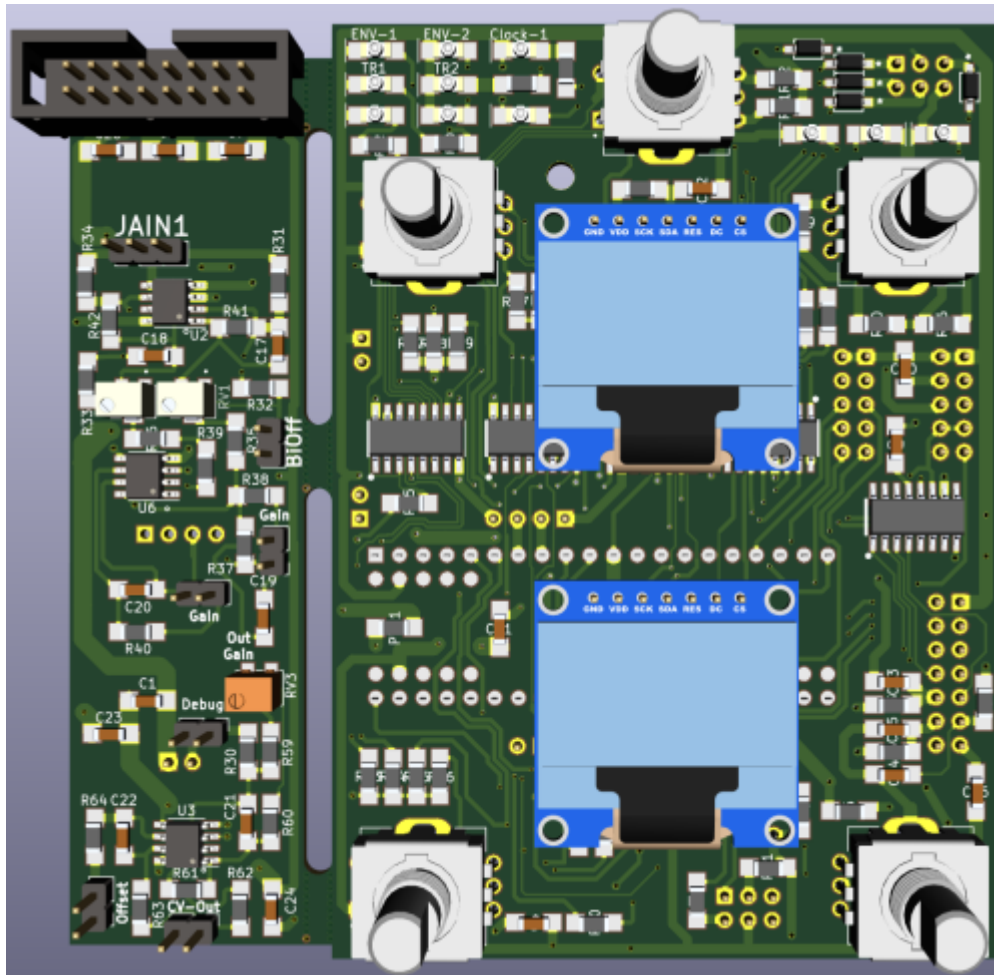
- @JMidi1: connect your Sequencer to get Midiclock and Programchanges
- @JAIN1: 2 CV Inputs - 12V tollerant
- @JAUT3: 1 CV Output - (internal DAC with Protection Cirtuit > 12V Tollerant)
- @J19: Get up to 8 CV-Outputs, with a [AoutNG](#)
- @JLCD1: up to 4 Additional OLED-Displays for every one a Reset Line - so no additonal Circuit needet
- @J89: DIN and DOUT Shiftregister Chain: thought for decidet Expander Modules (which will come in near future
- @J2/Bootload: If the core is not starting up - because of bad-Firmware, then bridge this Jumper to come into the Bootload-Mode

Software

Firmware

yes it loopin... but not good enough to release anything...

Building



Frontpanel



Case

BOM

Comment	Designator	Footprint	LCSC Part Number	Library Type
100nF	C1,C2,C3,C4,C5,C6,C7,C8,C9,C10	midibox:1206-C	C24497	basic
10uF	C11,C12,C13,C14,C15,C16,C23,C24,C25	midibox:1206-C	C13585	basic
10pF	C17,C18,C19,C20,C21,C22	midibox:1206-C	not available	
1N4148W	D1,D2,D3,D4,D5,D64	midibox:SOD123-DIODE	C81598	basic
ENC	ENC1,ENC2,ENC3,ENC4,ENC5	midibox:ENC-PEC11R		652-PEC11R-4015F-S24
5x2-AOUT	J19	midibox:Header-2x5		
BootLoad	J2	midibox:Header-1x2		
DinDout	J89	midibox:Header-2x5		
HEADER_3	JAIN1	midibox:Header-1x3		
Header-1x4	JAIN2	midibox:Header-1x4-female		
Header-1x4	JAIN3	midibox:Header-1x4		
CV1	JAUT1,JAUT2	midibox:Header-1x2		
CV-OUT1	JAUT3	midibox:Header-1x2		
BiOff	JG1	midibox:Header-1x2		
Gain	JG2,JG3	midibox:Header-1x2		
Disconnect	JG4	midibox:Header-1x2		
Offset	JG5	midibox:Header-1x2		
Foot	JG6	midibox:Header-1x2		
Gates	JGate1	midibox:Header-2x3		
OLED3-6	JLCD1	midibox:Header-2x7		
Midi	JMidi1	midibox:Header-2x3		
Header-2x8-eurorack	Jpsu1	midibox:Header-2x8-only-nose		
DIPCOREF4_52P	M1	dipcore-V2C:dipCoreF4_v2c-52p-DIP-40-CMPNT_CORE_52P		
uSD_DM3ATDM3AT	M2	midibox:uSD-DM3AT-SF-PEJM5		798-DM3AT-SF-PEJM5
6N138	M3	midibox:DIP-8		512-6N138M
LED-Green	Menue-1,TR1,Clock-1,ENV-1,Menue-2,TR2,ENV-2,Menue-3,Menue-4,Menue-5,Menue-6	midibox:1206-LED	C559120	extended
OLED	OLED1,OLED2	SSD1306:OLED-SSD1306-128x64		
PTC	PTC1	midibox:1206-R	C126818	extended
10K	R28,R29,R43,R44,R45,R46,R47,R48,R49,R50,R51,R52,R53,R54,R55,R56,R57,R58	midibox:1206-R	C17902	basic
49K9	R30,R31,R32,R33,R34,R35,R36,R37,R38,R39,R40,R61,R62,R64	midibox:1206-R	C18017	extended
30K	R41,R42	midibox:1206-R	C17999	extended
130K	R59	midibox:1206-R	C17893	extended
100K	R60	midibox:1206-R	C17900	basic
1K	R1,R2,R3,R4,R5,R6,R7	midibox:1206-R	C4410	basic
4K7	R8	midibox:1206-R	C17936	basic
220	R9,R10,R11,R12,R13,R14,R15,R16,R17,R18,R19,R20,R21,R22,R23,R24,R25,R26,R27,R63	midibox:1206-R	C17958	basic
Trim-3224W-1-104E	RV1,RV2	midibox:Trimmer-3224W-1	C53229	extended
Trim-3214W-1-253E	RV3	midibox:Trimmer-3214W_Vertical		652-3214W-1-253E
74HC595	S1,S2,S3	midibox:SOP-16_SOIC-16	C5947	basic
74HC165	S4,S5	midibox:SOP-16_SOIC-16	C5613	basic
TL072	U2,U3	midibox:SOP-8_SOIC-8	C6961	basic
MCP6002	U6	midibox:SOP-8_SOIC-8	C7377	basic
mouse-cut	cut1,cut2,cut3	midibox:mouse-cut		

To Do

a housing/case or frontplate

Resources

Community users working on it

- **Phatline** = Programming, Documentation...

Just let a Private message on the forum to user already involved.

I have ProtoBoards here - i test one, and if it works, i can share them for Beta Testing-if you pay the postage

From:

<https://www.midibox.org/dokuwiki/> - **MIDIbox**

Permanent link:

<https://www.midibox.org/dokuwiki/doku.php?id=cv1&rev=1609553347>

Last update: **2021/01/02 02:09**

