

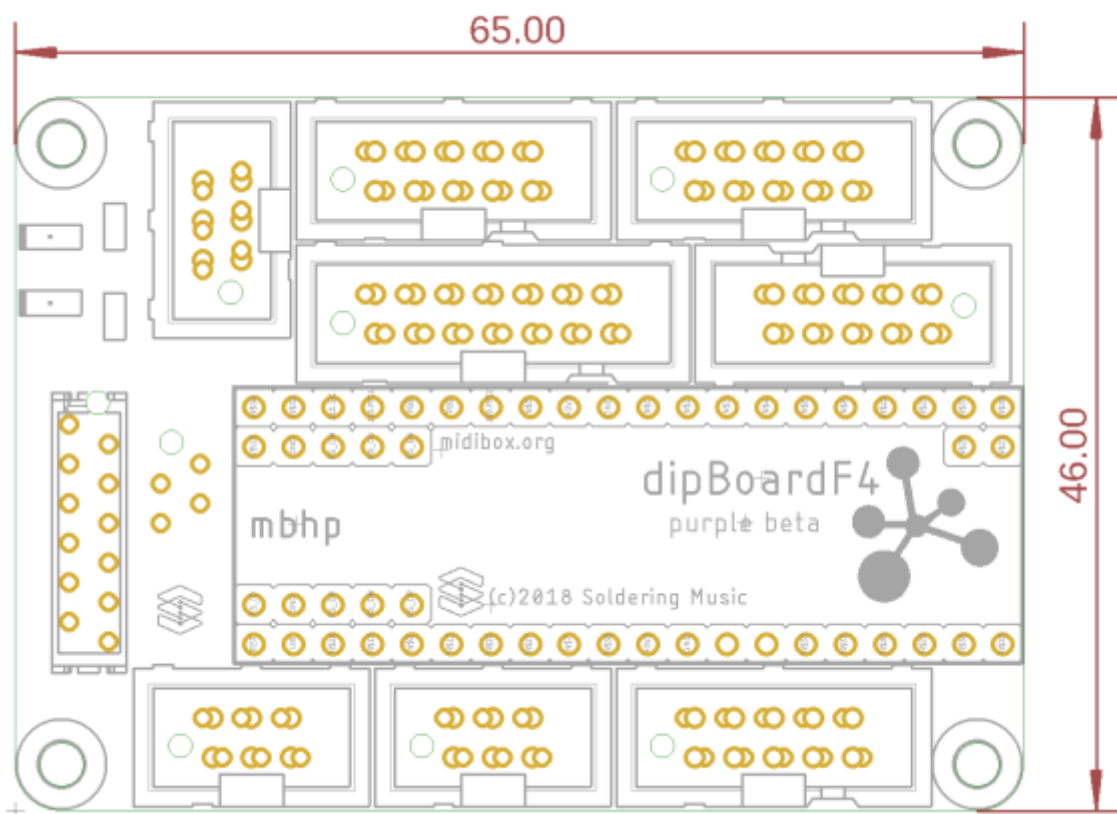
dipBoard32

MIDIbox Hardware Platform extension for [dipCore32](#).

Features

- Very small size 65x46mm(less than your credit card).
- Very low profile.
- Your application board can be stacked on bottom with 'Micro-match' connectors.
- The [dipCore32](#) can be installed on the two side.
- Provides all the most important features and ports as a regular mbhp.
- Compatible with Andy's [USB](#) and [RES-SD](#) modules.

Dimension



PCB

2 layers PCB design.
Fits 2 layer mostly common design

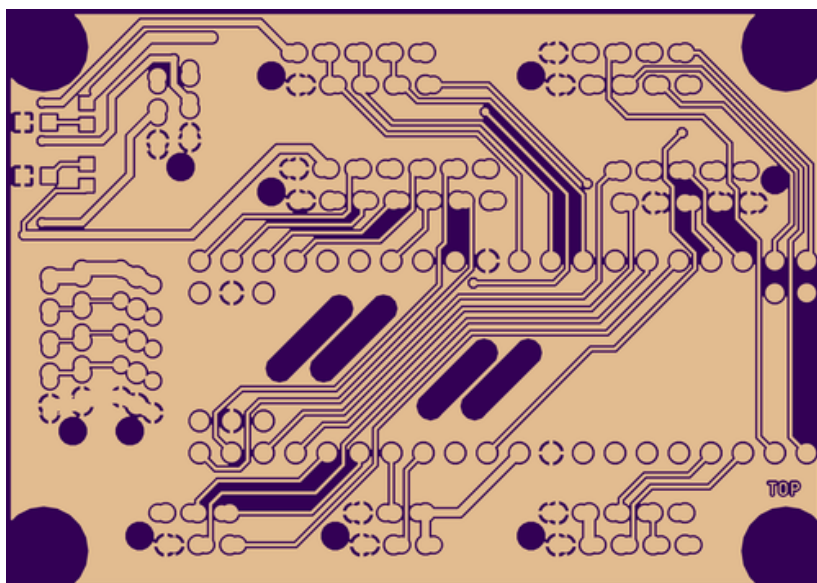


rules.

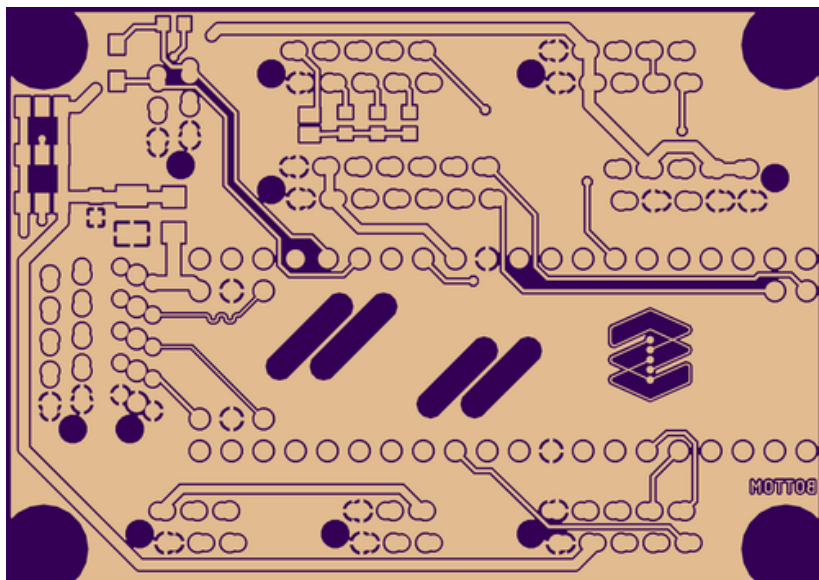
- min. drill 10mil
- min. width 6mil



Top copper



Bottom



Ports and features.

ToDo

Compatible/stack-able boards options

- [M16 Interface](#), stack-able, to connect on a SPI port, provides 16 MIDI IO and 48 GPIO



ToDo

From:
<https://www.midibox.org/dokuwiki/> - **MIDIbox**

Permanent link:
<https://www.midibox.org/dokuwiki/doku.php?id=dipboard32&rev=1535637139>

Last update: **2018/08/30 13:52**

