

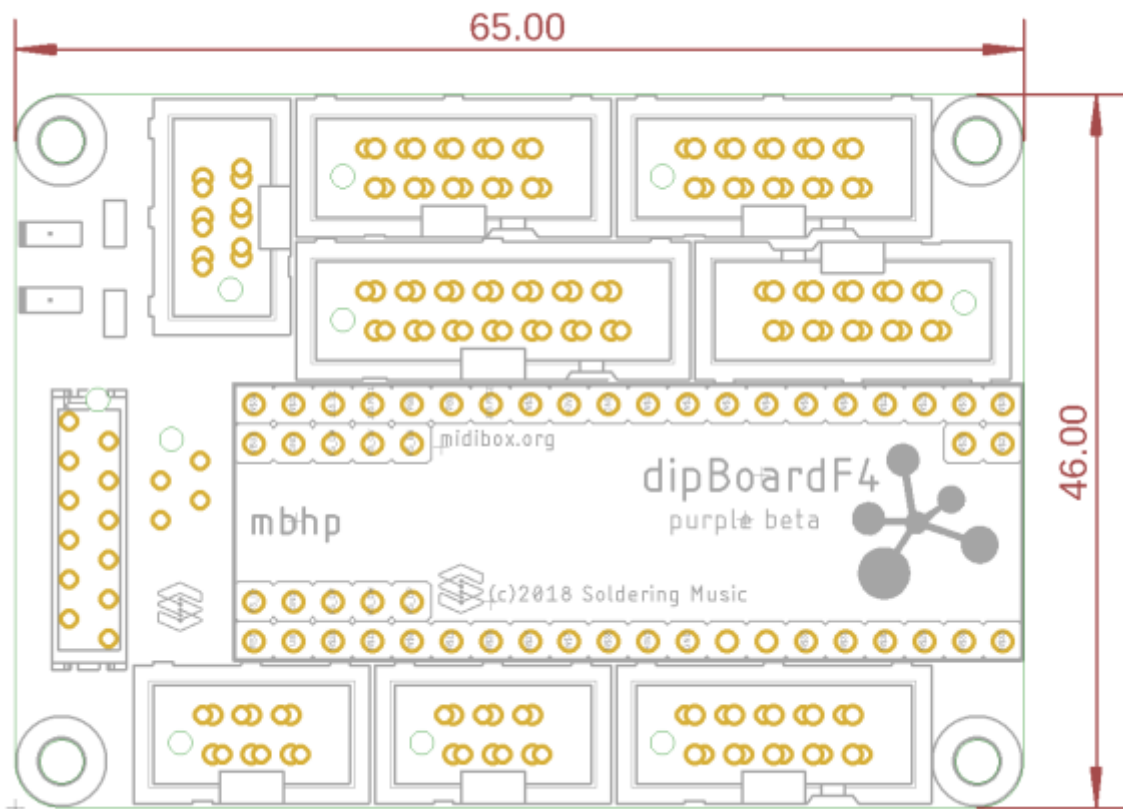
dipBoardF4

MIDIbox Hardware Platform extension for [dipCoreF4](#).

Features

- Very small size 65x46mm(less than your credit card).
- Very low profile.
- Your application board can be stacked on bottom with 'Micro-match' connectors.
- The [dipCoreF4](#) can be installed on the two side.
- Provides all the most important features and ports for regular mbhp.

Dimension



PCB

2 layers PCB design.
Fits 2 layer mostly common design rules.



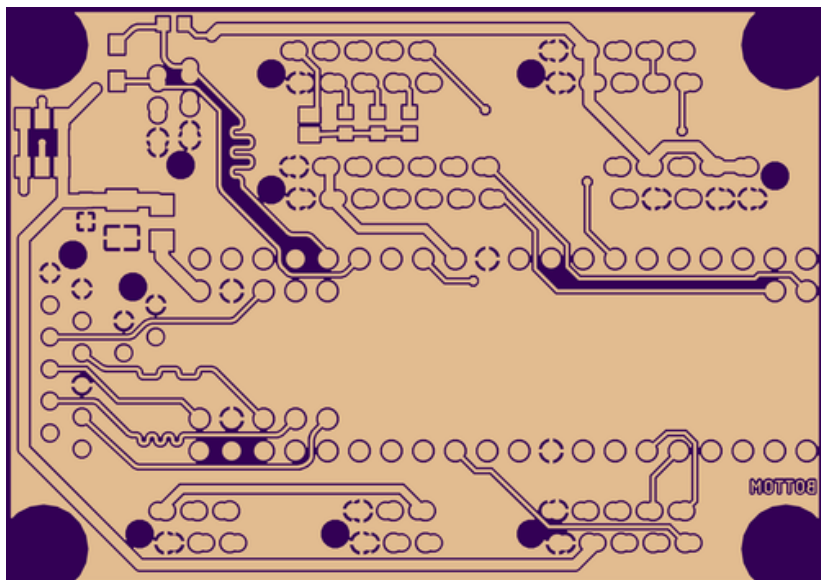
- min. drill 10mil
- min. width 6mil



Top copper



Bottom



BOM

version 1. Mouser BOM: [toDo](#)

| Qty | Value | Package | Parts | Mouser | Reichelt | Conrad | LCSC | Notes |
|--|--------------|--------------------|----------------|-------------------------------------|----------|-----------------------|-------------------------|---|
| Resistors | | | | | | | | |
| 2 | 680R 5% | 0603 | R1, R2 | 667-ERJ-PA3J681V | | | C103784 | Depends on Leds |
| 4 | 1K 5% | 0603 | R3, R4, R5, R6 | 755-ESR03EZPJ102 | | | C253329 | R3 if you use CAN without transceiver |
| PTC fuses, resettable thermistors | | | | | | | | |
| 1 | 1206L150THWR | 1206 | F1 | 576-1206L150THWR | | | C261956 | |
| Capacitors | | | | | | | | |
| 1 | 100n | 0603 | C2 | 80-C0603C104Z3V | | | C1688 | |
| 1 | 47u Tantalum | SMC_B(1210) | C1 | 74-TMCMB1C476MTRF | | | C112105 | |
| Diode | | | | | | | | |
| 1 | 1N4148WS | SOD323-W | D1 | 512-1N4148WS | | | C108805 | Only if you use CAN without transceiver |
| LEDs | | | | | | | | |
| 2 | - | 0805 | 5V, 3V3 | 755-SML-H12U8TT86C | | | C72037 | |
| dipCoreF4 socket | | | | | | | | |
| 2 | 1x20 | low profile female | | 517-929870-01-20-RA | | C9811 | | for pads 1 to 40 |
| 2 | 1x5 | low profile female | | 517-929870-01-05-RA | | | no need | for pads 41 to 50 |
| 1 | 1x2 | low profile female | | 517-929870-01-02-RA | | | C9811 | for pads 51 to 52 |
| Connector | | | | | | | | |

| Qty | Value | Package | Parts | Mouser | Reichelt | Conrad | LCSC | Notes |
|--|--------------------|---------|-----------------------------|--|----------|--------|------|-----------------|
| Resistors | | | | | | | | |
| 1 | micro-match 2x6 | Female | J1A | 571-8-215079-2 or 571-1-2178710-2 (value line) | | | | Place on top |
| 3 options available for PORTs connectors(depends on you app.) | | | | | | | | |
| Option 1 - Regular Shrouded Headers | | | | | | | | |
| 3 | 2x3 | Male | J5, J11, J18 | 710-61200621621 | | | | Place on top |
| 4 | 2x5 | Male | J4, J8/9, J15, J19 | 710-61201021621 | | | | Place on top |
| 1 | 2x7 | Male | J16E | 710-61201421621 | | | | Place on top |
| Option 2 - Stacking Micro-Match Connector | | | | | | | | |
| 1 | 2x2 | Female | J1B | 571-7-215079-4 or 571-2178710-4 (value line) | | | | Place on bottom |
| 3 | 2x3 | Female | J5, J11, J18 | 571-215079-6 or 571-2178710-6 (value line) | | | | Place on bottom |
| 4 | 2x5 | Female | J4, J8/9, J15, J19 | 571-12150790 or 571-1-2178710-0 (value line) | | | | Place on bottom |
| 1 | 2x7 | Female | J16E | 571-8-215079-4 or 571-1-2178710-4 (value line) | | | | Place on bottom |
| Option 3 - Micro-Match Paddle Board for low profile connector | | | | | | | | |
| 3 | 2x3 | IDC | J5, J11, J18 | 571-7-215570-6 | | | | Place on top |
| 4 | 2x5 | IDC | J4, J8/9, J15, J19 | 571-1-215570-0 | | | | Place on top |
| 1 | 2x7 | IDC | J16E | 571-8-215570-4 | | | | Place on top |

Ports and features.

toDo

Compatible/stack-able boards options

- All [uCapps](#) mbhp modules are compatibles.
- [USB](#), [SD-Card](#), [External Power](#) and [MCAN](#) modules are available.
- [M16 Interface](#), stack-able, to connect on a SPI port, provides 16 MIDI IO and 48 GPIO



For any questions, informations or observations do not hesitate to contact me (Forum).
[Antichambre](#).

From:

<https://www.midibox.org/dokuwiki/> - **MIDIbox**

Permanent link:

<https://www.midibox.org/dokuwiki/doku.php?id=dipboardf4&rev=1541209753>

Last update: **2018/11/03 01:49**

