

Display Driver - Board - for 18 SSD1306 Screens



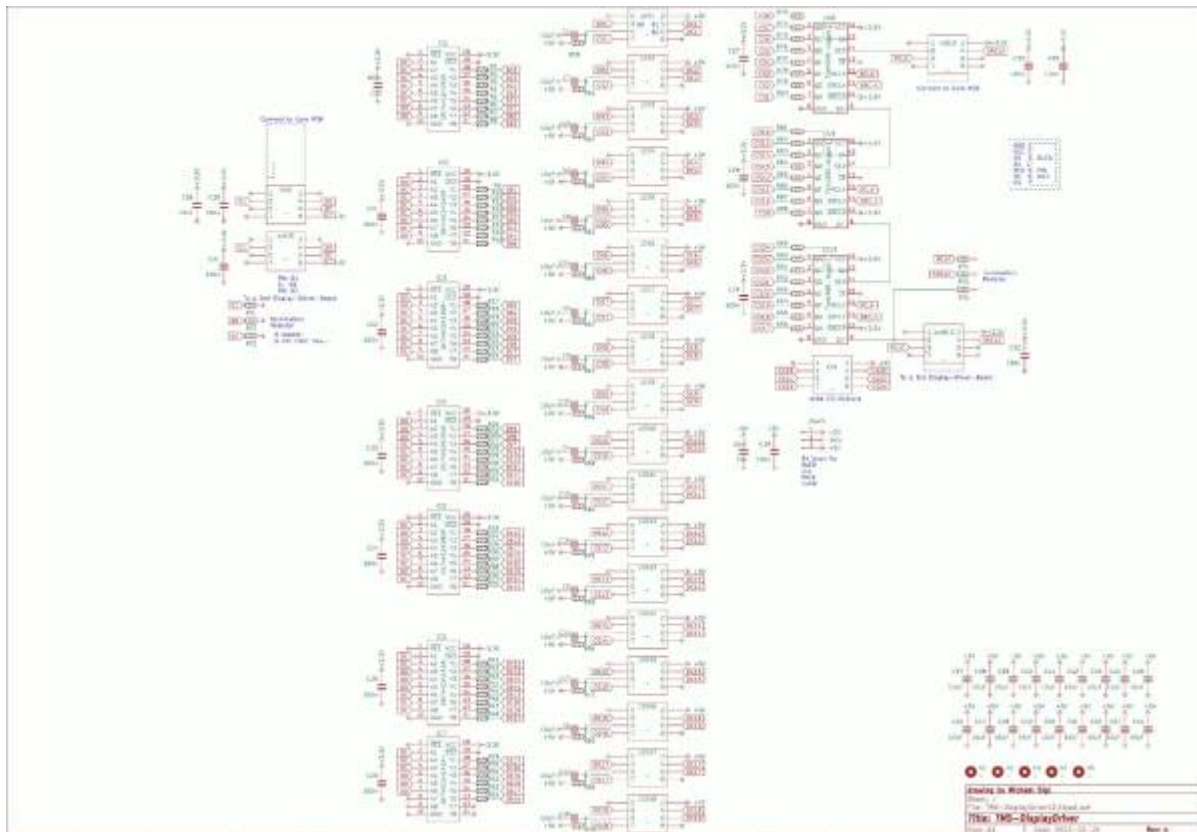


this is one essential part for my [triggermatrix5](#)

I need there 18 Display, and i had good experiece with andys [display_driver](#)-board since i didnt want to solder this board by hand again - i created this board. its fully SMD, and made it pick and place ready - so no soldering required!

Schematic

[display-driver-smd-schematic.pdf](#)



Building and BOM

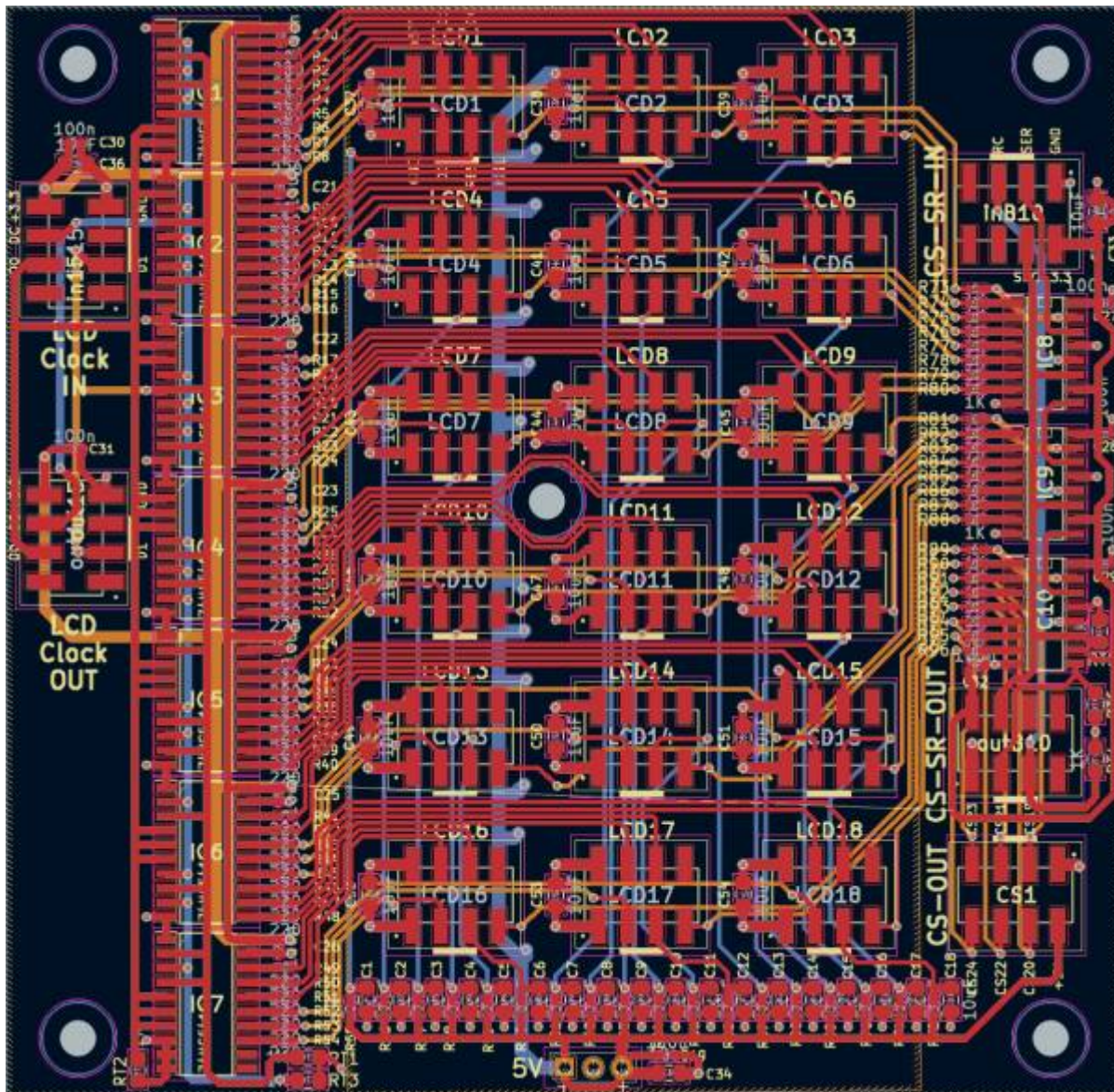
The Values are printet on the PCB.

[blm16x16-pcb-back.pdf](#)

[blm16x16-pcb-front.pdf](#)

BOM

| Comment | Designator | Footprint | LCSC |
|-----------|-------------------------------|--------------------------|-----------------|
| 10uF | C1-18,C34-54 | 0805_C | CL21A106KAYNNNE |
| 100n | C19-33 | 0402_C | C307331 |
| - | CS1,LCD1-18,inB10,outB10,in15 | PinHead-SMD-2,54mm Pitch | C192300 |
| SN74HC541 | IC1-7 | SOIC127P780X200-20N | C116811 |
| 74HC595 | IC8-10 | SOIC-16 | C5947 |
| 220 OHM | R1-54 | 0402_R | C25091 |
| 1K OHM | R55-96 | 0402_R | C11702 |



To Do

Order the Prototype, waiting for christmas....

Community users working on it

- **Phatline** = PCB & Schematic, UI-Programming, Documentation...

Just let a Private message on the forum to user already involved.
or join the forum: [daw-controller-ableton](#)

From:

<https://www.midibox.org/dokuwiki/> - **MIDIbox**

Permanent link:

<https://www.midibox.org/dokuwiki/doku.php?id=displaydriver-smd&rev=1671936335>

Last update: **2022/12/25 02:45**

