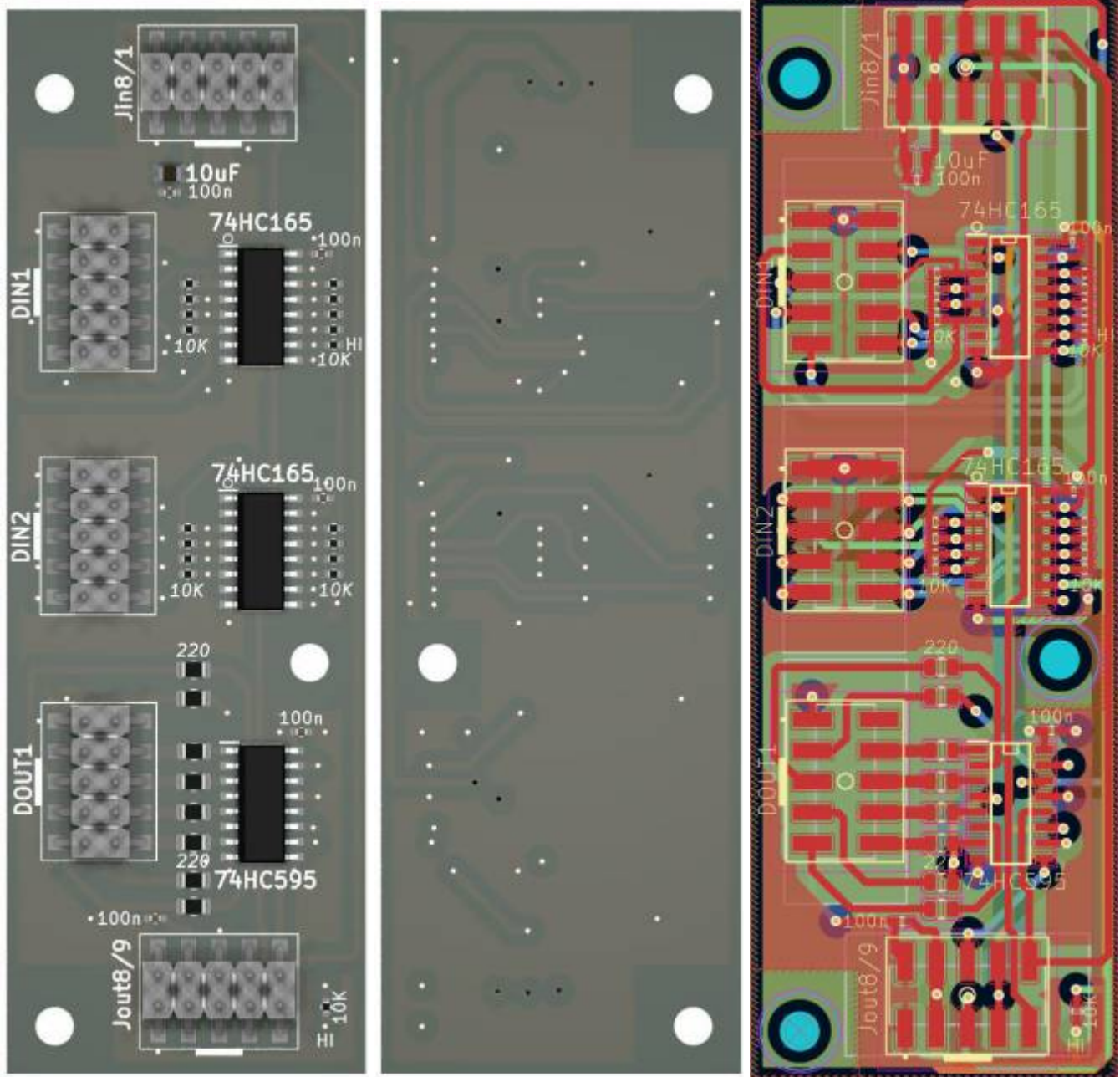


DinX2DoutX1



it gives;

- 16 Digital Inputs
- 8 Digital Outputs

The Board is fully SMD, and made for pick and place - so no soldering required!

Schematic

To Do

waiting for the assembled Prototype

Community users working on it

- **Phatline** = PCB & Schematic, UI-Programming, Documentation...

Just let a Private message on the forum to user already involved.

or join the forum: [Triggermatrix 5](#)

From:

<https://www.midibox.org/dokuwiki/> - **MIDIbox**

Permanent link:

<https://www.midibox.org/dokuwiki/doku.php?id=doutx2dinx1&rev=1673226703>

Last update: **2023/01/09 01:11**

