

SCS OLED module

Combination of 0.96" SSD1306 OLEDs and switches for an [SCS](#)

Schematic

BOM v1.0

Part	Value
C25	DNF
C26	DNF
C29	10uF polarised
EN1	12mm
EN2	12mm
J1	PINHD-2X54WALL
J2	+5V
J5	PINHD-2X54WALL
LCD1	0.96_OLED
LCD2	0.96_OLED
LCD3	0.96_OLED
LCD4	0.96_OLED
R3	DNF
R4	DNF
R7	DNF
R9	2k2
S1(A)	DT6 or 6mm
S2(A)	DT6 or 6mm
S3(A)	DT6 or 6mm
S4(A)	DT6 or 6mm
S5(A)	DT6 or 6mm
S6(A)	DT6 or 6mm

Versions

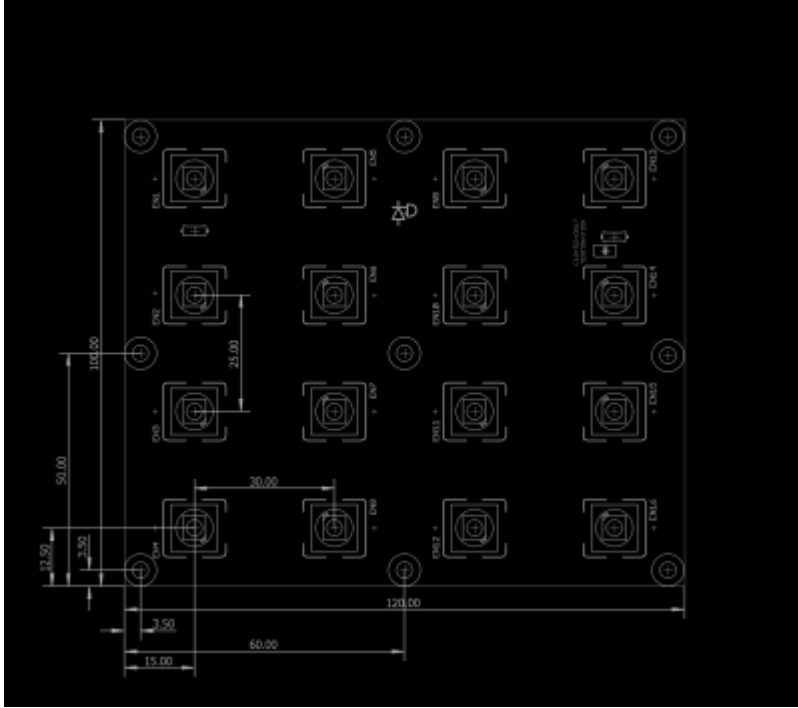
v1.0: first release

Assembly

Interconnections

- J1

Dimensions



encs_dxf.zip

License

Currently the design is © 2016 antilog devices with all rights reserved; all documentation is CC BY-NC-SA 3.0.

From:

<https://www.midibox.org/dokuwiki/> - **MIDIbox**

Permanent link:

https://www.midibox.org/dokuwiki/doku.php?id=enc_4_4&rev=1520293968

Last update: **2018/03/05 23:52**

