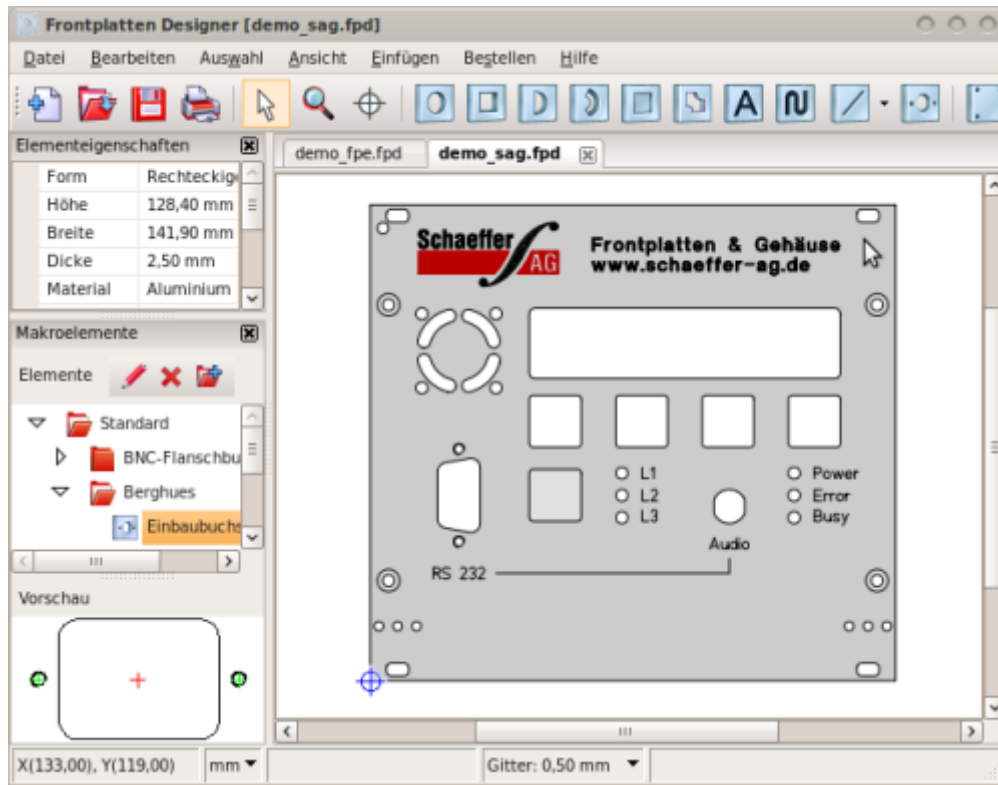


FrontPanel Designer

FrontPanel designer is a proprietary tool Edited By [Schaeffer](#) to draw (Aluminium) frontpanels and have them made. Schaeffer is located in Germany.



FrontPanel Designer has been used to draw many frontpanels for the midibox project. It handles the *.fpd files.

Installing

You can download it here:

http://www.schaeffer-ag.de/en/downloads/front_panel_designer/?no_cache=1

Just take the right Installer for your operating System and follow the instructions

Getting into it

The Manual could be found here :

http://www.schaeffer-ag.de/fpd-doc/en/index.htm?fpd_welcome_frontpld.htm

From:
<https://www.midibox.org/dokuwiki/> - **MIDIbox**

Permanent link:
https://www.midibox.org/dokuwiki/doku.php?id=frontpanel_designer&rev=1467029589

Last update: **2016/06/27 12:13**

