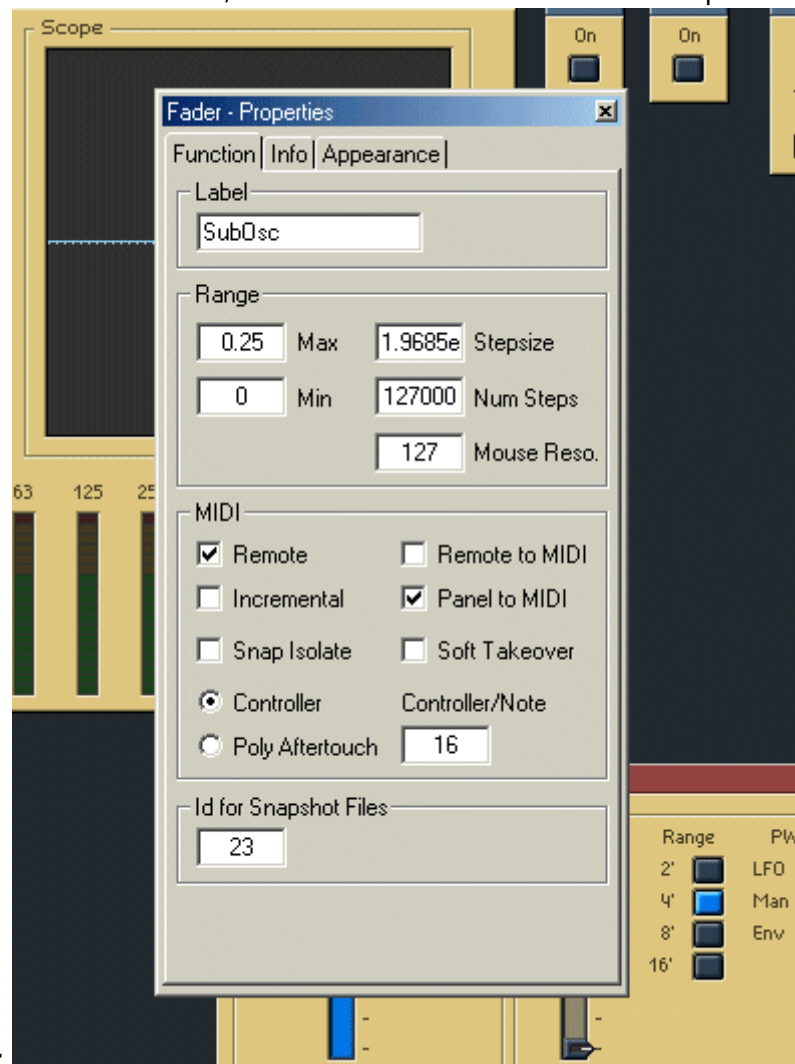
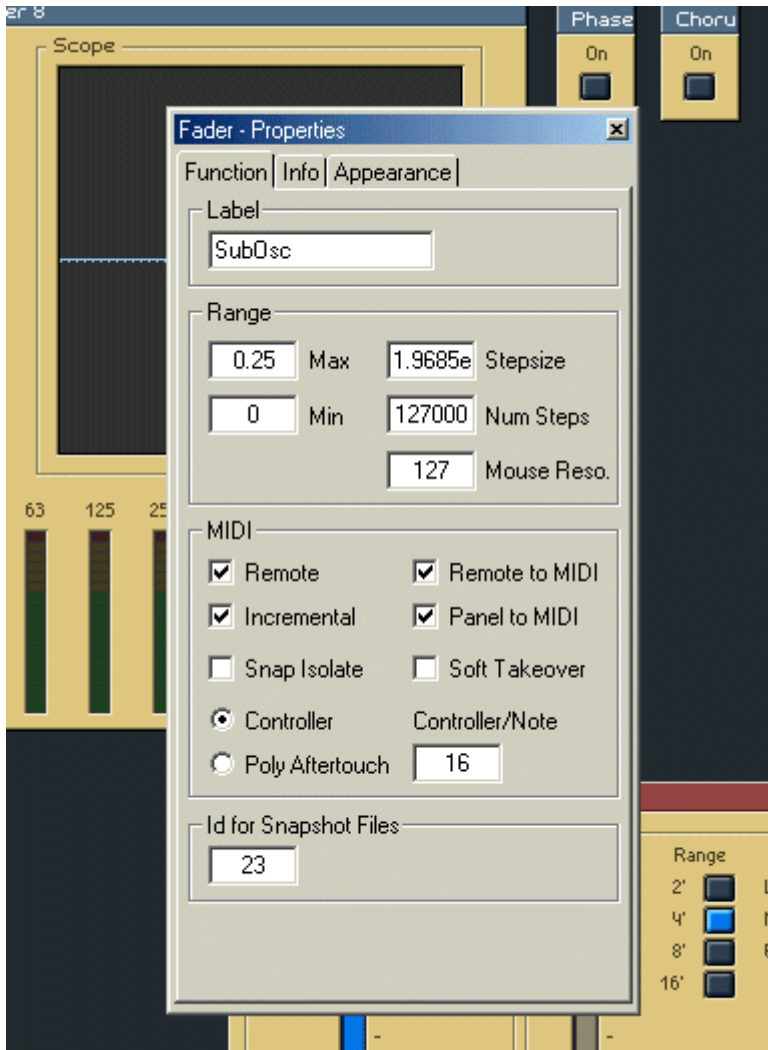


Pots/Faders or Encoders in absolute mode: best choice if you control the virtual instruments not only with MIDIbox64E, but also with MIDIbox64 or any other MIDI controller which sends absolute values. The parameter "SubOsc" is assigned to Controller Bn 10 xx (10 hex = 16 dec), Remote is enabled, panel to remote is also enabled for the feedback, so that the absolute value will be updated when you



move the fader with the mouse:

Encoders in relative mode (40 +/- speed): best choice if you control the virtual instruments with MIDIbox64E only. Remote, Incremental and Panel to MIDI enabled, Remote to MIDI is also enabled to get back the absolute value of the changed parameter in order to update the LED ring.



From: <https://www.midibox.org/dokuwiki/> - **MIDIbox**

Permanent link: <https://www.midibox.org/dokuwiki/doku.php?id=reaktor>

Last update: **2006/10/15 09:35**

