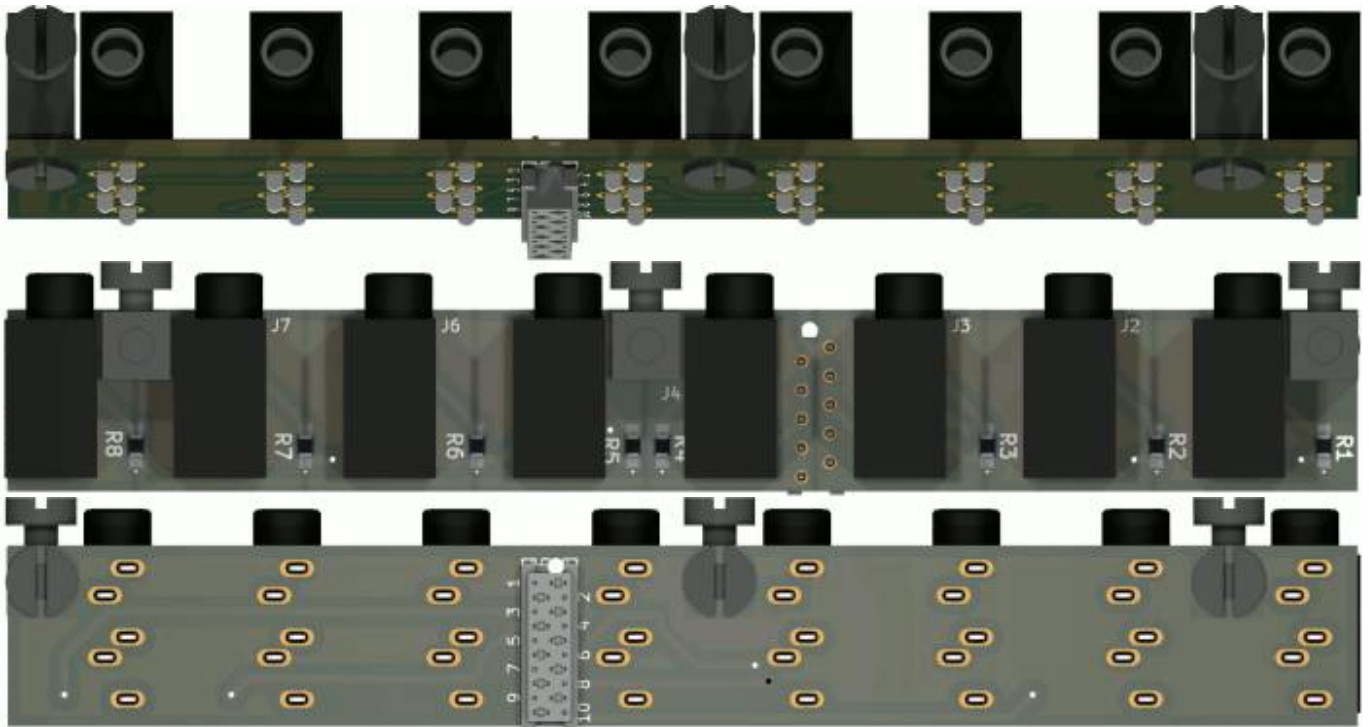
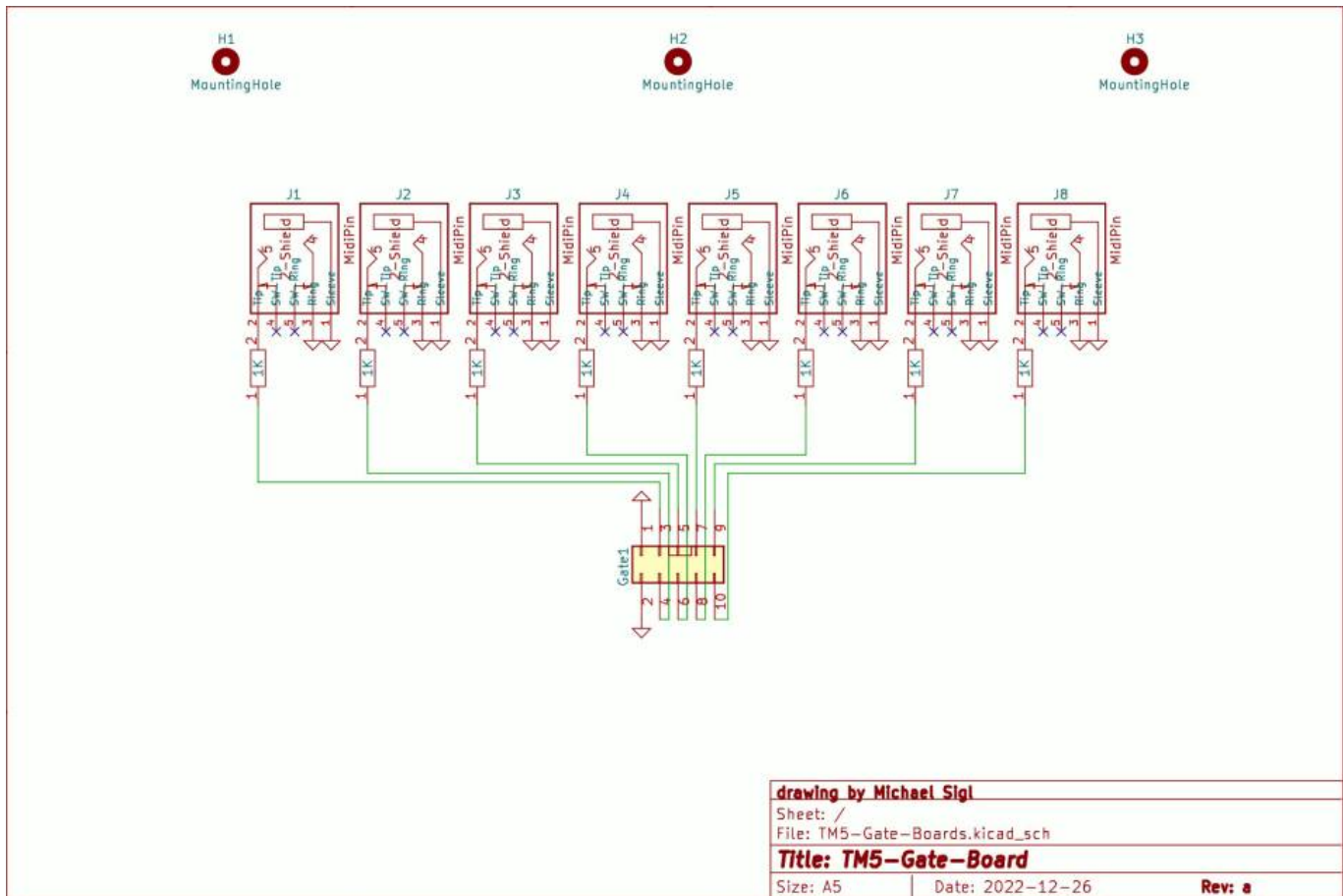


# TM5 Gate-Expansion



This are the Gate In/Out boards, 4 off them are needet to get 16x Gate-input/Trigger, and 16x Gate-Output [triggermatrix5](#)

## Schematic



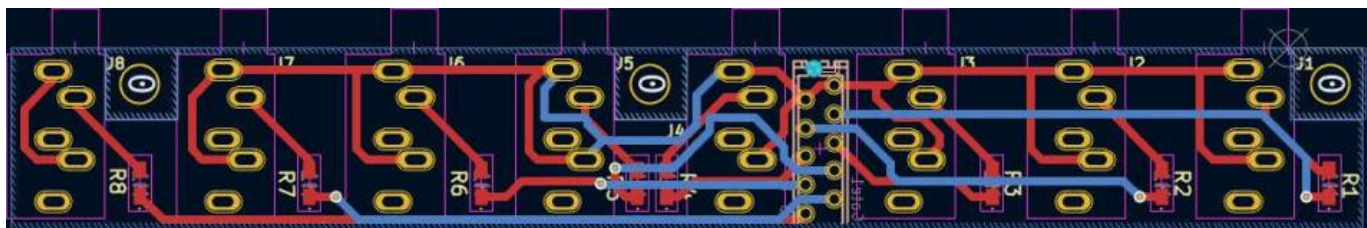
# Building and BOM

Handsolder...

## BOM

| qty | reference  | value                 | footprint                              | MouserPartNr     |
|-----|------------|-----------------------|--|------------------|
| 1   | Gate1      | Header-2x5-Micromatch | Header-2x5-Micromatch                  | 571-1-2178710-0  |
| 3   | H1, H2, H3 | Montageblock          | Mounting-Hole-M3-for-FPanel-with-Block | none             |
| 8   | J1-J8      | 3.5Jack for Gates     | 3-5JACK-CUI_SJ1-3535NG                 | 490-SJ1-3535NG   |
| 8   | R1-R8      | 1K                    | R-1K-0805-250mW                        | 667-ERJ-P06J102V |

I dont have to forget to order a ton off "Montageblock"...



# To Do

waiting for Prototype PCB

## Community users working on it

- **Phatline** = PCB & Schematic, UI-Programming, Documentation...

Just let a Private message on the forum to user already involved.

or join the forum: [Triggermatrix 5](#)

From:

<https://www.midibox.org/dokuwiki/> - **MIDIbox**

Permanent link:

<https://www.midibox.org/dokuwiki/doku.php?id=tm5-gate-board&rev=1672079837>

Last update: **2022/12/26 18:37**

